



The Paint Palace

Project Summary

Location: Block "N", Lot "E", La
Union, West Coast Demerara

5/3/23

Introduction

The Paint Palace is a new and upcoming company in Guyana looking to manufacture and distribute Duratex paint to potential customers. The company will be constructing a warehouse of approximately 16,200 square feet for manufacturing & storage of duratex paint & its aggregates (Sand, Clay & Paint) and housing the production machinery. 55 feet Width x 184 feet Length of state land is required for this project.

The project is currently under construction which will require 4 stages are included as follows:

1. Mobilization- The initial stage of construction where preparations will occur onsite prior to the commencement of any work. This phase involves the selection of the contractor and building plans are typically approved by the Central Housing & Planning Authority.
2. Excavation - The removal of topsoil to create the building foundations.
3. Installation of foundation – Installation of concrete base to support and anchor the superstructure of a building.
4. Frame construction – The structure will be constructed with hollow blocks.

Construction is expected to be completed by May 2023.

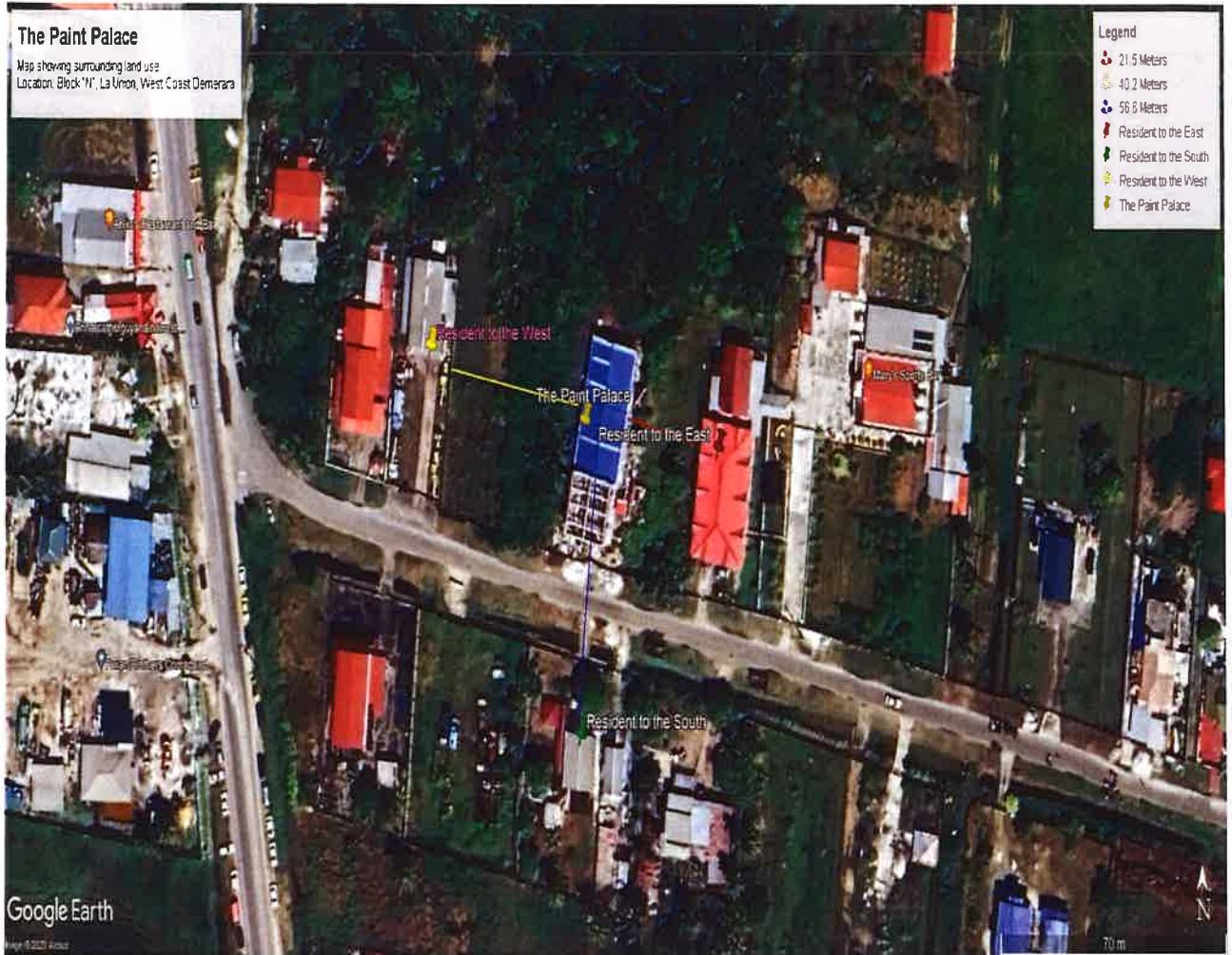
Project Location

The Paint Palace is located at Block "N" Lot E L.A. Union West Coast Demerara. The site can be accessed via the West Coast Demerara main access road, turning right into La Union, this is the corner located obliquely opposite Pura's Brother Compound. The main access road is made of asphalt, thus reducing any impact to the existing road.

Surrounding Land Use

The current land use surrounding the project can be classified as mixed-used land since several businesses are located within close proximity to the project. However, based on the map provided below, there are currently empty plots of land located on the eastern and western sides of the facility.

MAP



What is Duratex Paint?

Duratex is a tough, durable, and waterproof fibre cement paint perfect for house cladding and for buildings. It is a non-fading, mold, and moisture resistance paint (also known as tex) for all types of weather. It also provides a solid substrate for applied decorative finishes when combined with proprietary jointing and coating systems.

Manufacturing Process

Equipment that will be used during the manufacturing process are:

1. Electrical Mixer
2. Ransom
3. Drill Gun

The manufacturing process for Duratex involved the use of several raw materials such as sand, clay, and paint. These materials are sources from different suppliers and are truck to the location when need. Further, when these materials are delivered to the location, it will be stored within the warehouse.

These materials are placed in the motor-powered ransom and mixed for approximately 10 mins, after this, the mixed materials are placed in five (5) gallons buckets and the various colors of paints are added and remixed using an electric mixer.

Potential Impact Of the project

Environmental impacts are expected to be emitted during both the construction and operational phase of the project. The impacts are mainly to the Air & Noise from the aggregates, generator sets, transport vessels, and transferal & mixing of the

Mitigation measures

Noise from Construction:

1. The noise from construction will not be continuous.
2. Vehicles such as trucks, forklifts, etc. will not exceed 25 km.
3. Construction hours are 8:00 to 5:00 pm.

Noise from Operation

Noise is expected to be emitted from the manufacturing machinery & Generator set. The measures in place to mitigate this are as follows;

1. All Machinery will be housed within a hollow block Warehouse.
2. Manufacturing machinery is equipped with silencers & will be placed on a concrete base to aid in vibration reduction.
3. The 4000-watt generator set will be stored within a concrete enclosure to aid in the reduction of the noise which may be emitted. The gen-set is also enclosed by a case, silencer & muffler to further reduce noise.

Air Emissions from Construction will not be continuous therefore the impact will not be significant.

Air Emission from Operation

Air emission is expected to be emitted from the generator (Carbon monoxide, Carbon Dioxide, Sulfer dioxide) & Manufacturing phase of the project. To mitigate these impacts, the following will be implemented:

1. Generator sets will be equipped with primary & secondary filtration systems.
2. The warehouse will be equipped with a proper ventilation system to capture & filter any fumes in the air.
3. Mixing will be done within the warehouse & within the mixing machine.
4. Sand and other aggregates will be covered with tarpaulin.

Waste Management.

Waste oil, oily rags, etc. produced from the maintenance of the generator set will be stored in secondary containment constructed with hollow blocks. In the case of an accidental spill, spill kits will be on-site to contain both spillages from paints & Waste oil. All maintenance of machinery will be done within the warehouse, and generator room which is constructed with concrete base.

Accidental discharge of paints will be vacuumed and placed back into the necessary container. A chemical paint stripper or thinner will be to the paint for as long as directed and wash away.

Approved by

A handwritten signature in cursive script, appearing to read "Looknarine Basdeo", written over a dotted horizontal line.

Looknarine Basdeo