

Rickey Trucki ng



PROJECT SUMMARY

Contact:

Telephone Number(s): 645-2550

Email: rickeyramkishun1983@gmail.com

Date: 9/28/2024

Prepared by: Brupaul Ramkishun

Background

Rickey Trucking Service is a medium scale business formed by Mr. Bhupaul Ramkishun in the year 2018. At Rickey Trucking Service, we strive to offer prompt and reliable delivery services to meet our customers' needs. We transport goods, materials, waste materials, etc. to both large and small-scale clients. We maintain the highest standards of service in the trucking transportation service industry.

Rickey Trucking Service is a registered sole trader operation, with the main service being provided by the competent and experienced driver, Mr. Bhupaul Ramkishun. An able-bodied individual is also hired as a Laborer/Porter, who assist in lifting, positioning, or giving directions when and where necessary.

Since the commencement of the business, we continue to provide prompt and reliable trucking transportation services to our clients, ensuring that their transporting needs are met. The driver and porter are being screened once a year by a physician for mental and physical fitness. Whenever a contract is awarded to the company, an orientation session is conducted. The session will cover the nature of the contract, nature of organization, rules and regulations, nature of employer operation, the risk and safety rules and regulations, organization policies, procedures, quality, safety, environment, and security etc.

The driver is trained to be courteous, and assess safety and environmental risk when transporting hazardous substances.

Driver and porter are also being re-oriented once every year on:

- Traffic rules and regulations
- Defensive Driving
- Transportation on dangerous goods
- Courtesy to be extended to all road users
- Care of motor vehicle and equipment
- Maintenance of vehicles log and records
- Importance of routine inspection of vehicles before and during operation
- Emergency response plan

Business Objective

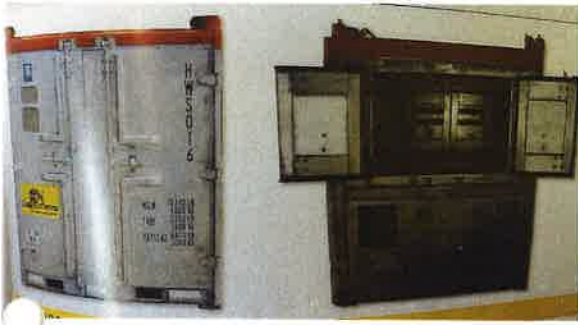
- Transport load from assigned location to destination without incident or injury
- Meet and exceed client expectation for project

- Comply with all legal requirements

Transporting

- Hazardous Waste
- Oily rags
- Medical waste
- Oily water
- Contaminated water
- Expired substances/items
- Any other item as identified by the client

All hazardous waste will be transported at 2 units per trip weighting approximately 3 tons.



Preparation for the journey

The following steps will be taken before each journey:

1. Route Survey

The driver will drive along the selected route to identify hazards that may impede the safe execution of the job. Any new hazards identified are assessed, and personnel are trained or informed accordingly.

2. Vehicle Checks

A checklist is completed by the driver on the day of the journey as they conduct a walk around inspection of the vehicle. Any defects identified must be corrected before the vehicle is used or another road ready vehicle will be used.

3. Toolbox Talk

There will be a meeting at the beginning of each workday to discuss the assigned job for the driver and porter, review of safety data sheets as necessary and discussion of a safety topic relevant to the day's activities.

Vehicles and Equipment Safety and Protective Standards and Systems

We are complying with the rules and regulations that are set out in the United States Department of Transportation, Federal Motor Vehicles Standards and Regulations that are relative and applicable to Guyana. The vehicle and equipment are equipped with all the required safety and protective equipment. Further, before the vehicle or machinery is deployed to a new working environment where we had never operated before, a risk assessment is being done prior to the deployment and if there is a void with what is required and what is available, immediate action is taken to fill that void.

Undertaking the Journey

Given that the route is within GYSBI compound only, the route survey highlighted a few measures to be put in place, along the journey to ensure safe arrival at destination.

As a precautionary measure a slip rail with 2 flat pieces of wood will be installed on top of the load bent at both ends down where applicable. Additionally, a utility truck will accompany the loads exceeding 14ft in height. For lines that cannot be handled with the slip rail, the utility truck will be raised with non-conducting poles.

Primary Journey Routes:

While the operator of the truck resides in Hague, and the normal commute will be from Hague to GYSBI compound, hazardous waste will only be moved from Point A GYSBI (Houston) to Point B GYSBI (Houston)

(Least hazardous route) - This is the only available route currently and do not involve using the main highway. This reduces usual risk associated with multiple turns and traffic interaction at these turns.

Method(s) and location for the waste disposal/reuse/recycle

Rickey Trucking Services will disposal/reuse/recycle items/substances, as guided by GYSBI, in compliance with all applicable laws and legislations.

Emergency Response Plan

The emergency plan is enacted when normal company procedures cannot address the current situation or when the incident is beyond the control of the personnel on the scene. Reasonably foreseeable emergencies include but are not limited to:

1. Flat Tire
2. Dead Battery
3. Medical Emergency
4. Electrocution
5. Fire
6. Environmental Release

The following provides the steps of dealing with an emergency:

1. All work is stopped, and any existing hazard controlled if it is safe to do so.
2. The client representative is notified of the emergency.
3. All personnel are secured and then the cargo is secured.
4. The situation is assessed by the relevant emergency responder and addressed.
5. Where necessary the driver and/or vehicle is replaced to continue the journey and the situation continues to be resolved.

Do NOT attempt to clean up a spill if any of the following conditions apply:

* More than one chemical has been spilled.

* The quantity spilled is more than the available absorbent provided in the Spill Control Kit or the spill is greater than one liter.

* The chemical is classified as a toxic or poison. The chemical is highly flammable or explosive.

The substance is unknown, or you are uncertain of the hazards of the substance.

If chemical spilled is a liquid, respond as follows:

If you are UNABLE to deal with the release of a major spill, adhere to the following steps:

Incident Notification

1. Immediately upon discovery of an emergency incident related to the release of a hazardous chemical, inform the Supervisor on site and the QHSE Officer who will inform relevant authority.

2. Evacuate the area.

Site Control

1. The site is controlled and maintained by the QHSE Officer until relevant authority arrives.

2. No one is allowed to enter the area unless authorized.

If you are ABLE to clean up the spill without assistance, adhere to the following steps:

* Identify the chemical spilled to determine if you are capable of cleaning up the spill safely

Refer to the container label and/or Safety Data Sheet (SDS)

Use the appropriate personal protective equipment before cleaning up the spill

Contain the spill: cover the area that extends beyond all visible material and liquid with disposable, absorbent material (gauze pads or paper towels) absorbs the spill with a disposable gauze pad or tissue paper towel

Saturate the absorbent material with a neutralizing agent. Start pouring or squirting at the outer edge of the absorbent material and work toward the center, generously saturating all of the material;

Keep the material moist.

Discard everything into the appropriate container by using the biohazard- designated dustpan and brush. If there is no broken SOS or other "sharps" in the spill, it can be discarded into a biohazard bag. If the spill contains broken SOS, everything, including all of the absorbent material, is discarded into a large sharp container. Handle the material in the same manner as other infectious waste. Do not remove broken SOS from the debris

When the spill site has been cleaned, rinse the site with a suitable solution to disinfect. Dry the area to prevent slipping

Report spill to QHSE Officer and document how it was cleaned up.

If chemical spilled is a powder, respond as follows:

Identify the chemical spilled to determine if you are capable of cleaning up the spill safely

Refer to the container label and/or Safety Data Sheet (SDS)

Use the appropriate personal protective equipment before cleaning up the spill

Dust mop the spilled material carefully to prevent generation of dust

Place in a sealed container (e.g., zip lock bag, taped plastic bag) and label container with its contents

Dispose all clothing and materials (e.g., gloves, brooms, paper towels) used to clean up the spill inside a sealed, leak proof bag or container (e.g., zip lock bag, taped plastic bag).

Label and dispose of all bags or containers as hazardous waste.

Disinfect area with a suitable solution and allow area to dry to prevent slipping. Report spill to QHSE Officer and document how it was cleaned up.

Emergency Contacts:

*Police: 911

*Fire: 912

*Ambulance: 913

*Environmental Protection Agency (EPA):225-5471

*GPL: 226-2600

Monitoring and Evaluation

* All relevant personnel will receive training to ensure compliance with stipulations of the journey management plan and monitored to ensure compliance is maintained.

This journey management plan will be monitored for effectiveness and adherence to stipulations of said plan. The plan may be revised based on incident or emergency investigation, annual review or anytime it is deemed necessary after consultation with the client.

Non-Technical Explanation of the project

The Business invested approximately five million dollars (\$5,000,000 GYD) to initiate the operation. It is expected that Rickey Trucking Service be contracted to transport Hazardous Waste from Point A GYSBI compound to Point B GYSBI compound (one end of GYSBI compound to another end within the GYSBI Project Site).

The duration of the operation will be identified within the Contract awarded to Rickey Trucking Service by the GYSBI. The wastes to be transported, method (s) of disposal as well as operational procedures will also be identified within this contract.

