

6/23/2025

YAFI RICE MILL INC.

Project Summary

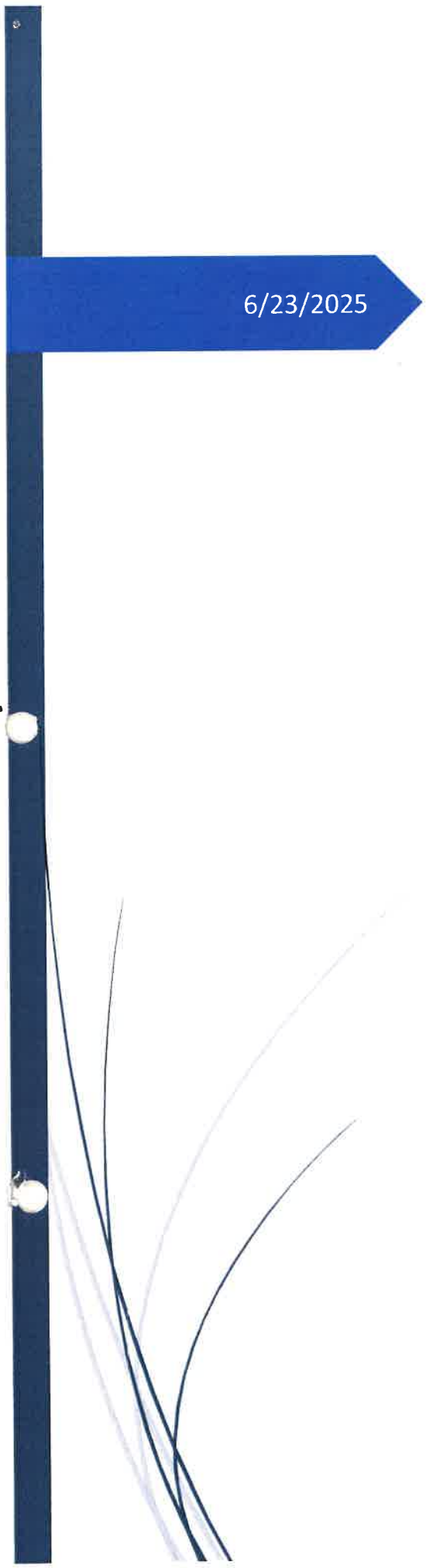


Table of contents

	Page
1. Description	2
2. Design	3
3. Layout	4
4. Pollutants and Mitigation	6
5. Conclusion	7

Description

Yafi rice mill began operations in 2017 after two years of construction and assembly. Soon after in 2017, ownership of the company was changed. An environmental authorization/permit, ref # 20160616 – YAFRM was issued to the company in October 2017 under its former owner Mr. Farouk Yussuf. This permit has since been expired hence a new application in the name of its current owners. The plant has been in operation successfully since commencement. Nothing has been added to the equipment, operations or products since inception.

Design

The plant is located at the back of Ruimzeight, West Coast Demerara. It sits on 4 acres of land. This land was initially 18 acres of rice land before being converted into its current operation. There are no residential houses surrounding the plant but rather rice fields.

Yafi Rice Mill currently buys paddy from farmers in surrounding areas. There are two rice crops in a year. March/April is the first crop and September/October is the second crop.

Paddy is firstly weighed on weigh bridge scale, then dump at the receiving hopper. Samples are taken to determine quality. Paddy is cleaned to remove impurities. It is then dried by mechanical tower dryer to reduce moisture from 20% to 16%, after which it rests for 8 hours. It is then dried a second time to reduce moisture to 12.5% and finally it is stored in silos. Milling is the last process which removes the paddy shell and leaves the brown/cargo rice. This is packaged into one-ton sacks for export.

The plant utilizes electricity from GPL as well as backup generators. Water is sourced from a GWI line. It is not used in the production process but rather for cleaning and sanitation purposes only.

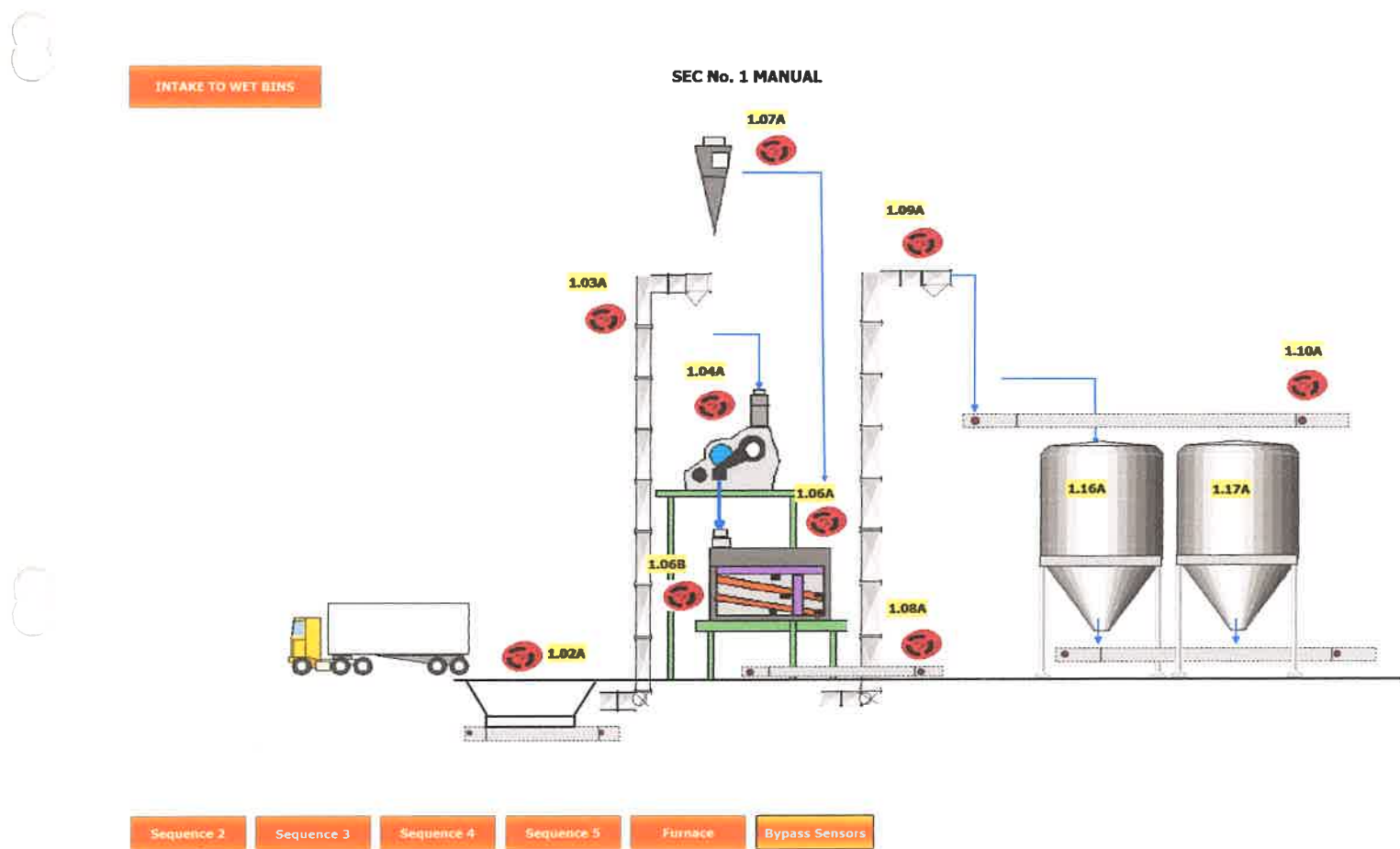


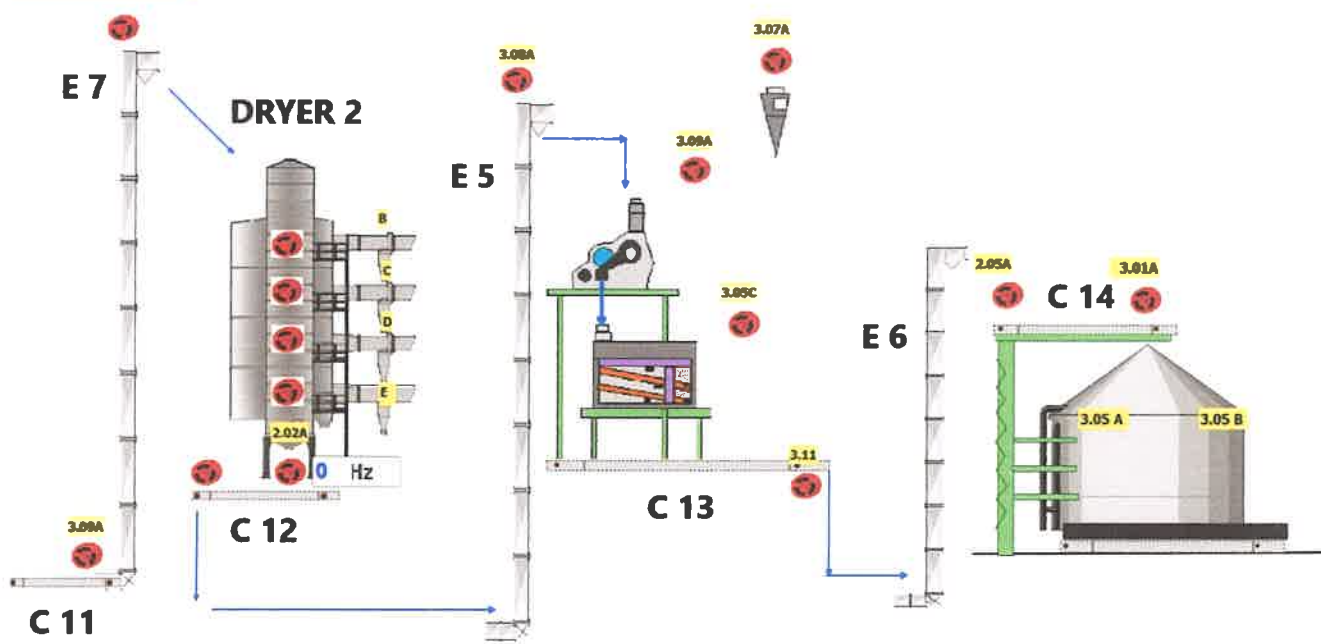
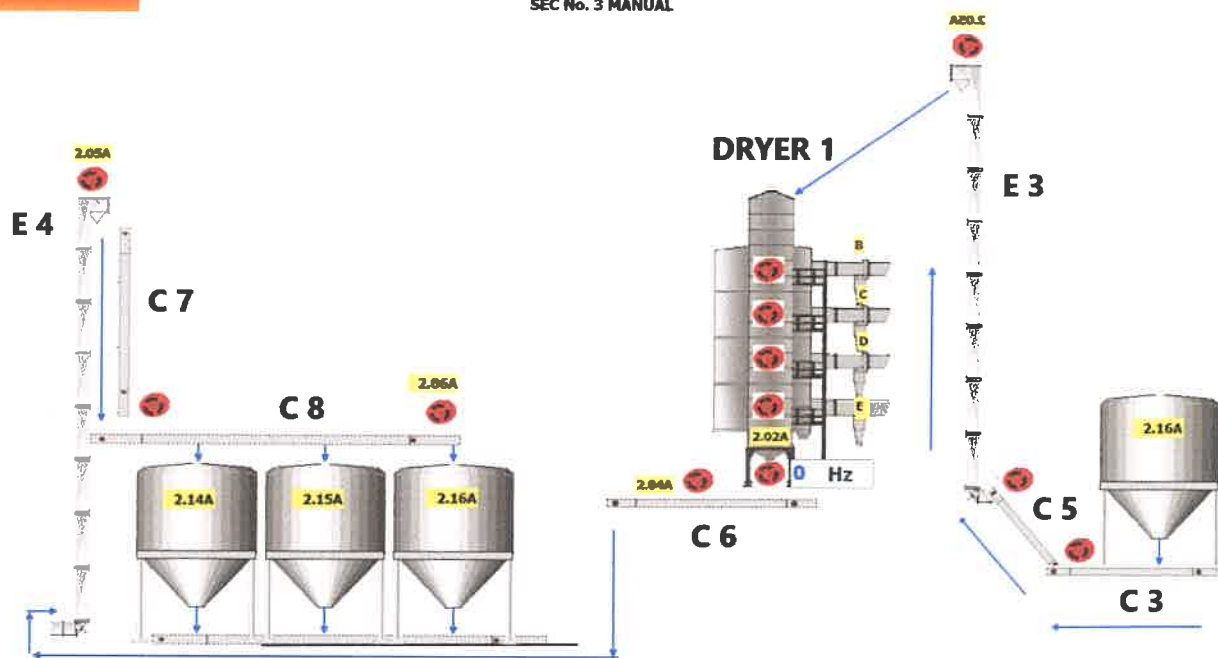
Layout

The plant consists of the following equipment:

1. One Weighbridge scale
2. One Receiving hopper
3. Three Paddy cleaners
4. Two SB40 tower dryers
5. Fourteen elevators
6. Eighteen conveyors
7. Two receiving silos
8. Three tempering silos
9. One 2500 MT storage silo
10. Four 2.5MT paddy shellers
11. Two paddy table separators
12. Two rice graders
13. One 625 kva generator

The above equipment were installed in 2017. No new additional equipment has been installed. The drawings below shows a layout and flow of the receiving and drying processes:

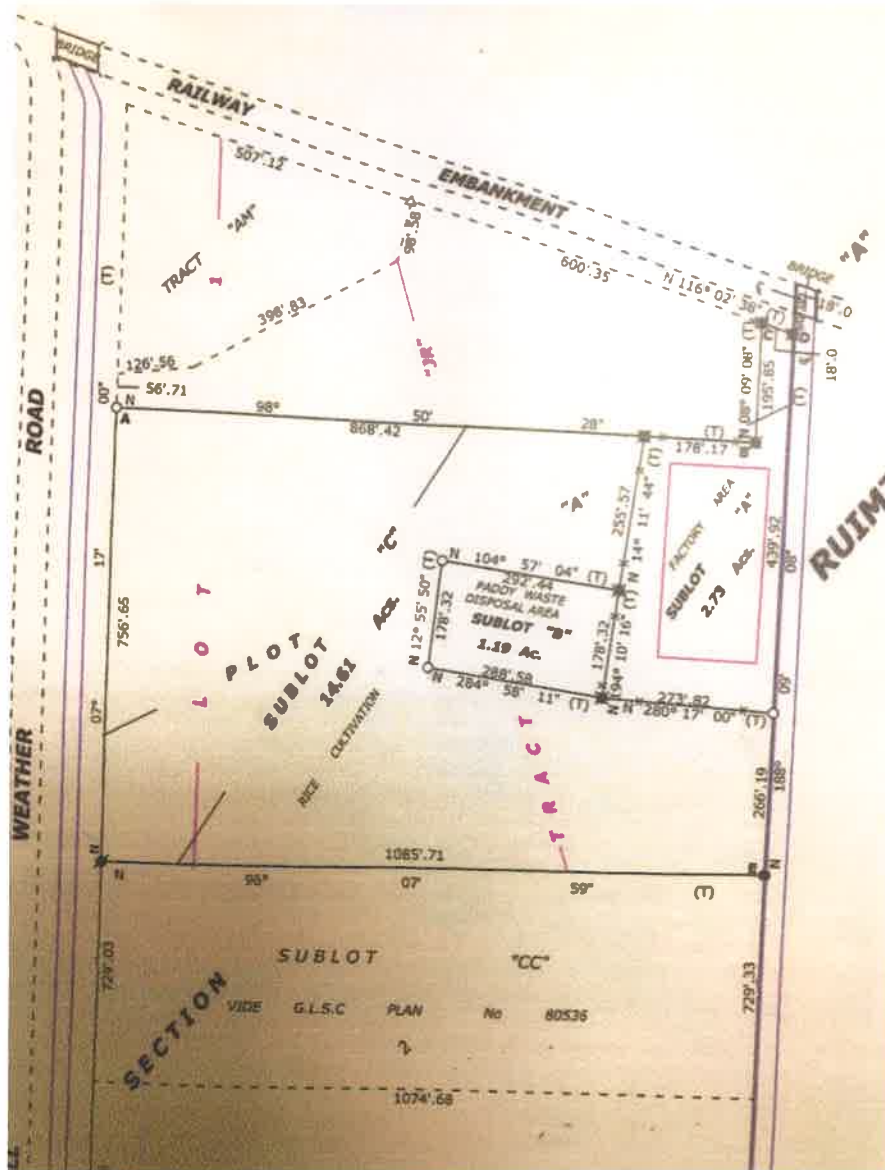




Pollutants and Mitigation

The following are pollutants and how they are mitigated:

1. Paddy shell – This is discarded on the company land, approximately 100FT from rice mill structure. It is burnt to improve compactness. The ash is subsequently removed and discarded into nearby rice field making the area clear. Plan below shows the area of disposal and rice field.
2. Paddy dust – The use of cyclones are used to trap dust from paddy dryers and paddy cleaners. It is physically transported to waste disposal site.
3. Noise – During the crop season, the plant is in operation 24 hours. The plant is covered by metal zinc sheets, which reduces noise levels. There is absolutely no or minimal noise at entrance of the plant.



Plan showing Yafi rice mill factory area, waste disposal and rice field

Conclusion

Yafi Rice Mill inc. is a good corporate citizen as such we arduously strive to minimize harm on the environment. We are committed to working with the EPA to ensure good environmental practices that is sustainable and beneficial to all stakeholders.