

Name of Project: Upper Berbice Multipurpose Co-operative Society Limited (UBMCSL)
Sawmill

Name of Developer: Anthon Thom

Project Address: Kwakwani Waterfront Berbice River, Region 10

Contact Details: 592- 674 8442, 592- 668-8234

Project Type: Sawmill

Projected Initial Capital Investment: Four (4) million GYD

Projected Annual Turnover of Project: Seven (7) million GYD

Date Prepared: 22nd January 2025

Prepared By: Anthon Thom

PROJECT DESCRIPTION

Project Location

The sawmill site comprises of a total of 16 hectares that is located at Jeep Landing at the Kwakwani Waterfront, Region 10. The main access point to the area is the Kwakwani Access Road from the Northern direction. The site is surrounded by forests with an unnamed creek further to the South of the plot (refer to GPS Coordinates, Site Plan & Map of Propose Location).

| |
|--------------------------|
| 21 N 0379121 UTM 0583886 |
| 21 N 0379189 UTM 0583946 |
| 21 N 0379085 UTM 0583918 |
| 21 N 0379159 UTM 0584006 |

Table 1 – GPS Coordinates of the proposed location

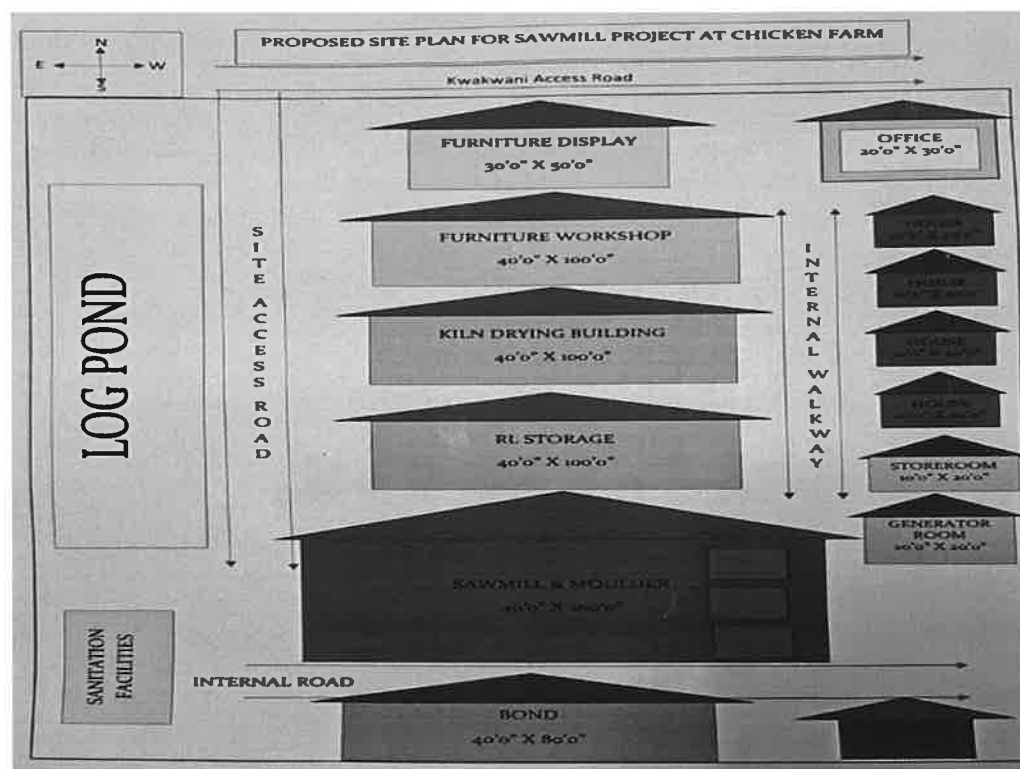


Figure 1 – Proposed Site Plan

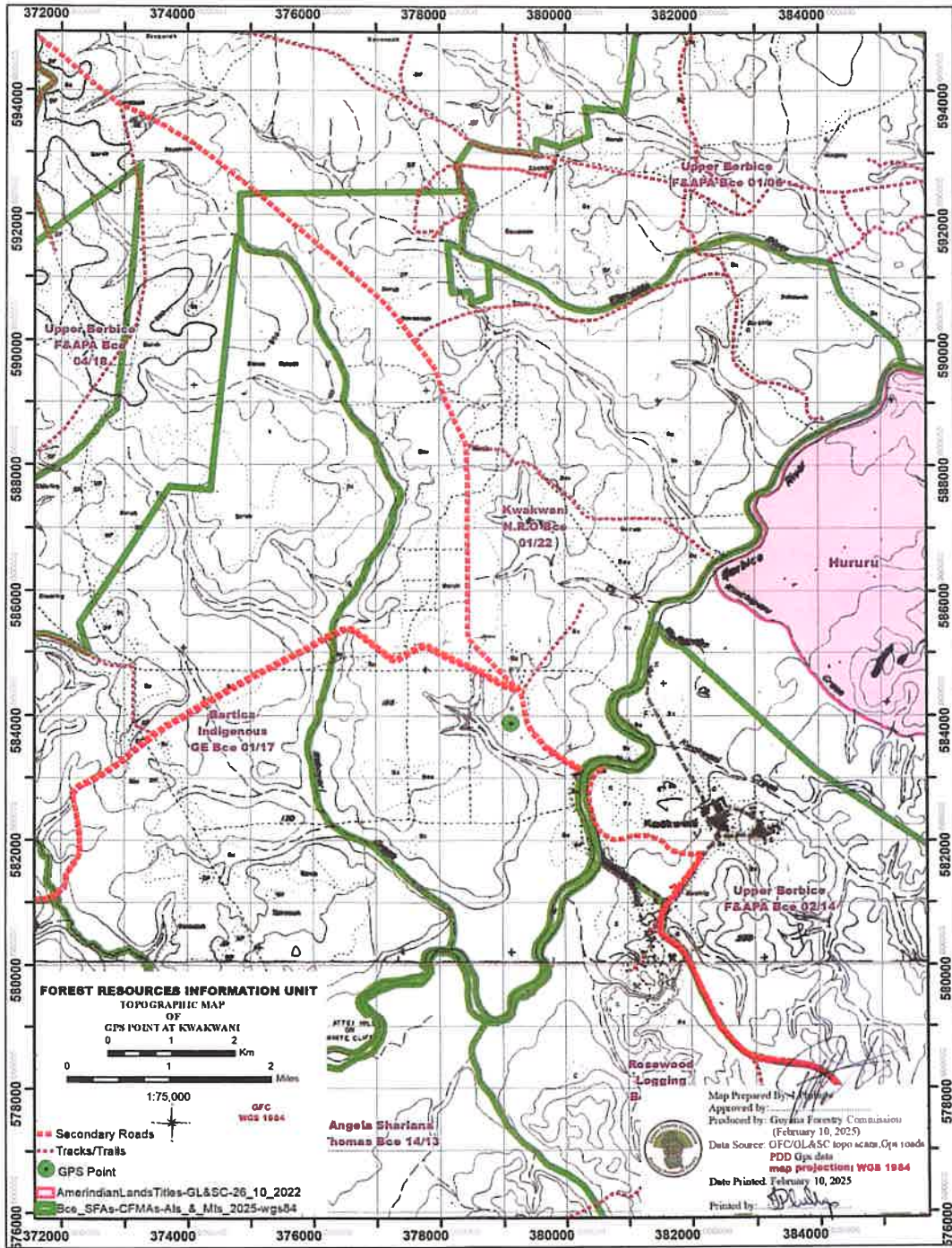


Figure 2 – Site Map with Surrounding Area

Project Description

The proposed project involves the establishment of a small-scale sawmill facility designed to process locally sourced logs into sawn wood for furniture, construction, and other applications. The facility will operate with a focus on sustainability, environmental compliance, and community benefits.

Project Objectives

- To create a localized, efficient timber processing operation to reduce the need for long-distance log transport.
- To process timber responsibly and promote sustainable forestry practices.
- To support local economic development through employment and collaboration with small-scale timber suppliers.

PHASES OF PROJECT

Construction Phase

Primary Sawmill Facility Details

Description: The structure will be supported by wooden posts, frames and walls with aluminum zinc roofing

Total Size: 40 ft. (width) x 200 ft. (length)

Duration of Construction: Approximately three months (subject to weather conditions)

Labor Force: 40 person

OPERATIONAL PHASE

Equipment to be Installed: The sawmill will utilize energy-efficient equipment, they include;

1. LT 70 Mill
2. Edger
3. Band Saw
4. Wood Lethe
5. Diesel generator

Electrical Support: electrical equipment will be installed by a certified electrician

Sawmill Capacity: LT 70 which will produce approximately 7 cubic meter per day

Storage: a temporary shed will be built for lumber storage until a lumber storage bond is built during the second year of operation. Lumber racks and dunnage will be used for log storage.

Production: the sawmill is projected to produce lumber at a rate of 6,000 BM on a monthly basis

Utilities:

- Water: Four (4) 750-gallon tanks mounted on a trestle
- Electricity: diesel operated generator at 275 kVA to power the equipment. This will be housed in a 14 ft. x 10 ft. storage house.

Work Force:

- Employees - 10 daily workers
- Hours of Operation - Monday to Saturday, 8:00 AM to 5:00 PM
- Safety Equipment – workers will be provided with PPEs including gloves, visibility vests, helmets, goggles, and steel-tip boots. ✓

Health & Safety Measurers

- A First Aid Kit will be available on site, it will be checked and refilled on a weekly basis
- A vehicle is on standby for emergencies
- Fires extinguishers and sand baskets are strategically place onsite and “No Smoking” signs are prominently displayed

ENVIRONMENTAL IMPACT AND MITIGATION MEASURES

1. Noise Control

- Equipment will be maintained to minimize noise pollution, and operations will be restricted to daylight hours.
- Noise generated by equipment, generators and machinery will be minimized by housing generators in an enclosed area with exhaust stacks

*(will it be in concrete
structure?)
(heat)*

2. Waste Management

Solid Waste

- Non-wood waste will be properly segregated and disposed of per local regulations (RDC). *(how will it be stored?)*
- Wood waste such as sawdust and shavings will be distributed locally to poultry and cash crop farmers while offcuts will be distributed to the community for re-planting and small building projects

Effluent Management

- Graywater and sewage are treated in a septic tank that will be emptied as needed by a disposal service.

Hazardous Waste

- Waste oil from machinery maintenance will be stored *(how will it be stored?)* and distributed to chainsaw operators in the Upper Berbice Multipurpose Co-operative Society Limited and further Kwakwani area.

3. Air Quality Control

- Dust and emissions will be minimized using dust collectors/ containment bins and well-ventilated workspaces.
- Sawdust will be removed regularly and floors are periodically wetted to control dust.

4. Fire Risks

- Fire extinguishers and sand buckets are readily available *(state how much)*.
- Staff are trained in fire safety and extinguisher use

- Regular inspections of the electrical systems will reduce fire risks.

SOCIAL AND ECONOMIC BENEFITS

- The sawmill will create approximately 200 jobs in the local community, both directly and indirectly.
- The project will contribute to the regional economy by supplying locally produced wood products.
- Given this level of achievement by the Upper Berbice Multipurpose Co-operative Society Limited and further Kwakwani it will foster a pride of community identity, pride and belonging
- Supply byproducts such as saw dust and offcuts to the community of Kwakwani

COMPLIANCE AND PERMITS

The project will adhere to all environmental, safety, and forest regulations required by the licensing agency. Key permits to be obtained include:

- Environmental Authorization & Permit - EPA
- No objection from the Kwakwani NDC Approval
- Permit to Erect – GFC
- Sawmilling License - GFC

CONCLUSION

This small-scale sawmill project has been designed with sustainability and environmental responsibility as key priorities. By following best practices in timber sourcing, waste management, and operational efficiency, the facility aims to minimize its environmental footprint while contributing positively to the local community of Kwakwani and further.

