

Small's Enterprise Project Summary



Name of Developer: Bruce Small

Project Name: Small's Enterprise

Address: 30 Hosororo Hill, Barima Waini, North West District, Region 1

Project Overview

Small's Enterprise is owned by Mr. Small Bruce, a Guyanese with a passion for and commitment to the development of Guyana. The hotel, restaurant, bar, and grocery store are located at 30 Hosororo Hill, Barima Waini, North West District, Region 1, Guyana. Small's Enterprise aims to provide high-quality services and products to both locals and tourists visiting the beautiful region of Barima Waini. With its convenient location and diverse range of offerings, the establishment seeks to contribute to the economic growth and overall enhancement of the community. comprising 16 exquisitely designed rooms, guaranteed to give guests a refreshing experience, a relaxing and comfortable stay, and exceptional customer service. Further, management's goal is to encourage a health, safety, and environmental culture among its employees and guests.

The construction of the hotel commenced in 2018, and the facility became fully operational in 2022. Small's Enterprise occupies a total land area of approximately 5.38 acres. The 2-story building (64 ft by 66 ft) consists of a hotel, restaurant, bar, and grocery store, with the reception area, restaurant, bar, and grocery store on the ground floor, while the first floor contains 16 rooms of various kinds to cater to the requirements of the guests.

Health, Safety and Environment (HSE) Policy

The HSE Policy of Small Enterprise has been designed to achieve the vision of the Company, as well as to ensure that current and future health, safety, and environmental legislation are adhered to. This policy will pave the way for Small Enterprises to have a competitive advantage in the hospitality industry, which will no doubt distinguish it from others in the business. It is envisioned that the HSE Policy will achieve environmental improvement through the integration of environmental considerations into strategic planning and decision-making in a coherent manner. It is the responsibility of every employee of Small's Enterprise to ensure that the HSE policy is adhered to in the performance of their respective duties. This policy will be communicated to all employees, guests, suppliers, and subcontractors.

The owner of Small's Enterprise will be responsible for the overall implementation and monitoring of the HSE Policy.

As part of its HSE Policy, Small's Enterprise commits to:

- Fully complying with local health, safety and environmental legislation.
- Implementing sound health, safety and environmental practices throughout the entire operation.
- Providing a safe working environment by identifying and controlling hazards.
- Supplying personal protective equipment (PPE) to all employees where necessary.
- Providing requisite information, training, and resources to employees on a continuous basis to enable them to meet the Company's health, safety, and environmental objectives.
- Encouraging resource conservation through minimization of energy, water, and materials use.
- Implementing a system of waste segregation throughout the entire hotel and restaurant operation.
- Reducing, reusing, and recycling the materials utilised by the hotel where possible and practical.
- Ensuring that health, safety, and environmental matters are discussed via a consultative process involving representatives of management and employees.
- Encouraging a safety culture among all employees through the provision of mechanisms for free and honest reporting of all health, safety, and environmental hazards which may exist, as well as incidents or accidents which may occur.
- Ensuring continuous improvement through monitoring of environmental performance regularly.

Project Description

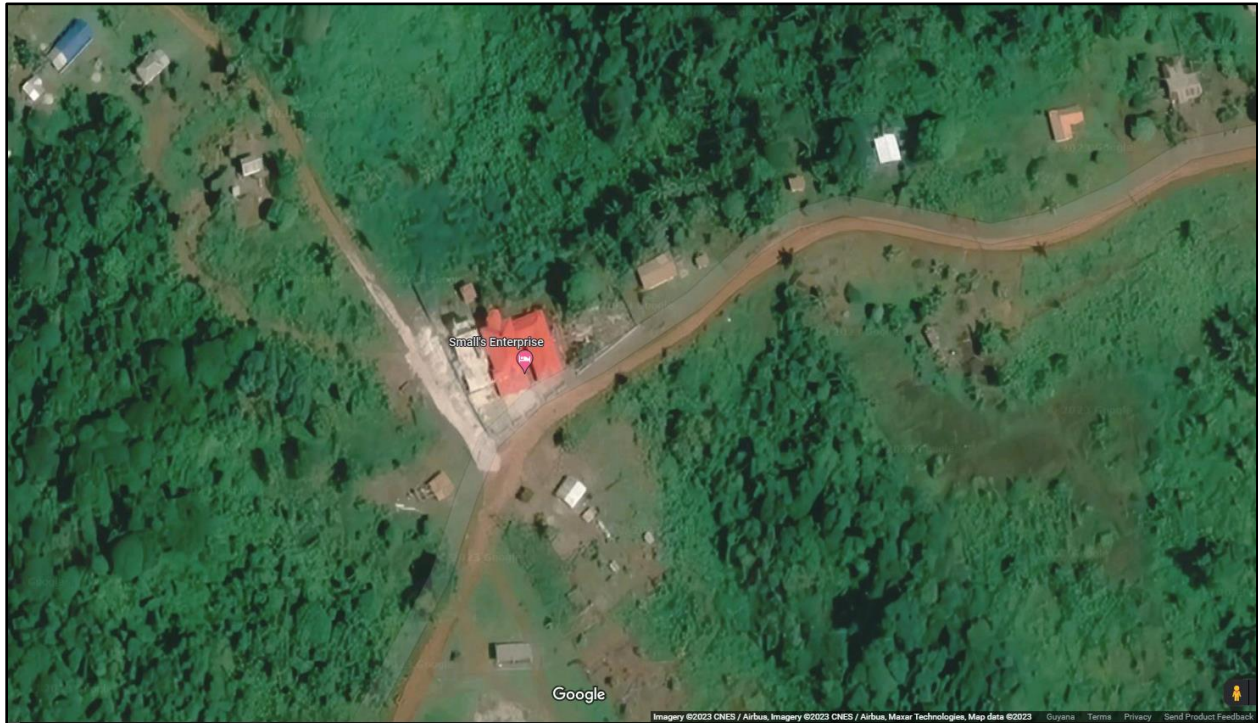


Figure 1: Map showing project location and surrounding land uses

Site Description

Small's Enterprise, a two-story mustard-colored building that the towering sign can easily identify, is suitably located in an agricultural, residential, and commercial zone. As demonstrated in the map attached above, the size of the aforementioned compound is approximately 180 ft by 260ft, surrounded by Hosororo Main Road and Bunbury Main Road, respectively.

Drains were constructed using the 2-inch and 4-inch PVC. The 2-inch PVC drains were installed to handle the wastewater from sinks and showers, while the 4-inch PVC drains were specifically designed to accommodate the larger volume of water from toilets and bathtubs. This was carefully constructed to ensure efficient drainage throughout the hotel premises for better water flow and to prevent any potential clogging or overflow issues causing any negative impact on the environment.

Project Design

Construction Phase

Construction of the hotel was completed in 2018, with the acquisition of materials such as stone, lumber, sand, cement, and steel. This was followed by building the concrete framework for the hotel and adding steel to the building. Further construction activities entailed completing internal designs and room separation, installing electrical and plumbing components, capping, tiling, addition of compound, and painting. Final touches were then added to the hotel by the installation of carefully selected, unique furnishing.

Operational Phase

Small's Enterprise is a 24-hour establishment staffed by six employees working from 8:00 am to 4:00 pm, 7-hour shifts daily. Daily housekeeping services are provided to ensure rooms and all areas of the hotel, bar, and restaurant are safe, healthy, aesthetically pleasing, and accessible to guests, employees, and customers. The employees are trained to thoroughly clean and sanitize each room to meet the highest standards of cleanliness. They also ensure that common areas such as the lobby, dining area, and bar are well-maintained and presentable. Small's Enterprise understands the importance of providing a clean and comfortable environment for its guests, and the daily housekeeping services play a vital role in achieving this goal.

Small's Enterprise was made aware of the need for an Environmental Authorisation from the Environmental Protection Agency (EPA), and all efforts have been directed toward having operation activities of the hotel authorised expeditiously.

Utilities

Electricity

The Mabaruma Power Station will supply the primary source of electricity for the hotel and bar. However, a 55 kVA and 60 KVA automatic switch generator are utilized in the event of a power outage.

Water

Water for the hotel and bar is provided by the Guyana Water Incorporated (GWI), water supply system. There are also 4 1000-gallon water tanks equipped with four automatic pumps to support the hotel's water supply during service interruptions. It should be noted that the reservoirs on-site only serve as a water storage mechanism since they receive water from GWI's water supply system and not from groundwater wells. Further, water required for drinking will be purchased.

Possible Environmental Impacts and Mitigation Measures during Construction and Operation of Smalls Enterprises.

Impact Area	Potential Environmental Impact	Mitigation Measures
Air Quality - Fugitive Dust - Exhaust emissions - Noise • Name & specs of generator	-Air pollution -Noise pollution -Foggy area -1 Royce 2500 jackhammer -1 1sac cement ransom -1 small generator	-Expert monitoring of area -Electrical tools will be used for less noise pollution -Neighbors will be informed about dates and time when loud equipment will be in use. -Generator(s) will be place strategically where there will be little/ less noise
Soil/Land	-Soil erosion -Deforestation	-Skilled workers will be hired to preform digging and all works related to land clearing and removal -Land was fairly cleared by past owners
Water Quality Management -Surface & groundwater	-Flooding -Water wastage -Polluted water ways	-Black Tanks and concrete vat will be in place to store water - Local GWI pipeline will be used -Drainage system will be in place so to prevent flooding
Fuel, Lubricants and Chemicals Management	-Air Pollution -Exposure to gasoline / diesel -	-Respiratory masks will be in place -Gasoline\ diesel will be stored in safe and heavily labelled containers
Waste Management -Domestic Waste - Sanitary wastewater/sewage waste - Construction Waste - Concrete Waste	-Land pollution -Air pollution	-Local Garbage collectors will be contacted to remove waste materials at al times -Recycling of waste concrete -Burial or waste material
Health and Safety Measures	-Minor injuries -Major injuries	-Personal protective equipment will be provided for workers -Multiple vehicles and drivers will be readily available to transport workers to hospital and or clinic -First aid kits will be available on site
General Health and Safety Concerns	-Stress -Injuries	-Screening - Workers will be compensated -Insurance