



**Project Summary**  
**Application for an Environmental Authorization**



## **INTRODUCTION**

### **Corporate profile**

#### **Business location and contact details**

PLANKA INC. is a newly registered company in Guyana, however, and will act as a subsidiary company to the existing companies being registered in Guyana since 2006 namely, RONG AN INC, CHINA ZHONGHAO, CHINA JAHAO, engaging in logging operation for export and local market, fuel imports and distribution, barge/ship building and logistics and transportation. The managing director of PLANKA INC. has been in operation in Guyana for in excess of 12 years and has a wealth of knowledge of the business and investment environment, hence, the establishment of this new company.

The registered address and other contact details for the enterprise are as follows:

- a) Registered Office, HQ: Lot A, Block 2, Land of Canaan, E.B.D.
- b) Registered Office factory: Block A, Coverden Public Road, E.B.D
- c) Telephone Office: 592-266-1842; Cell 592-682-1787
- d) Email: [planka.ea@hotmail.com](mailto:planka.ea@hotmail.com)
- e) Mailing address: Lot A, Block 2, Land of Canaan, E.B.D.

### **Staffing**

The Company is managed by the Managing Director/CEO Mr. Chen Ling supported by experienced personnel in production management and Finance. Below is a listing of the key management personnel.

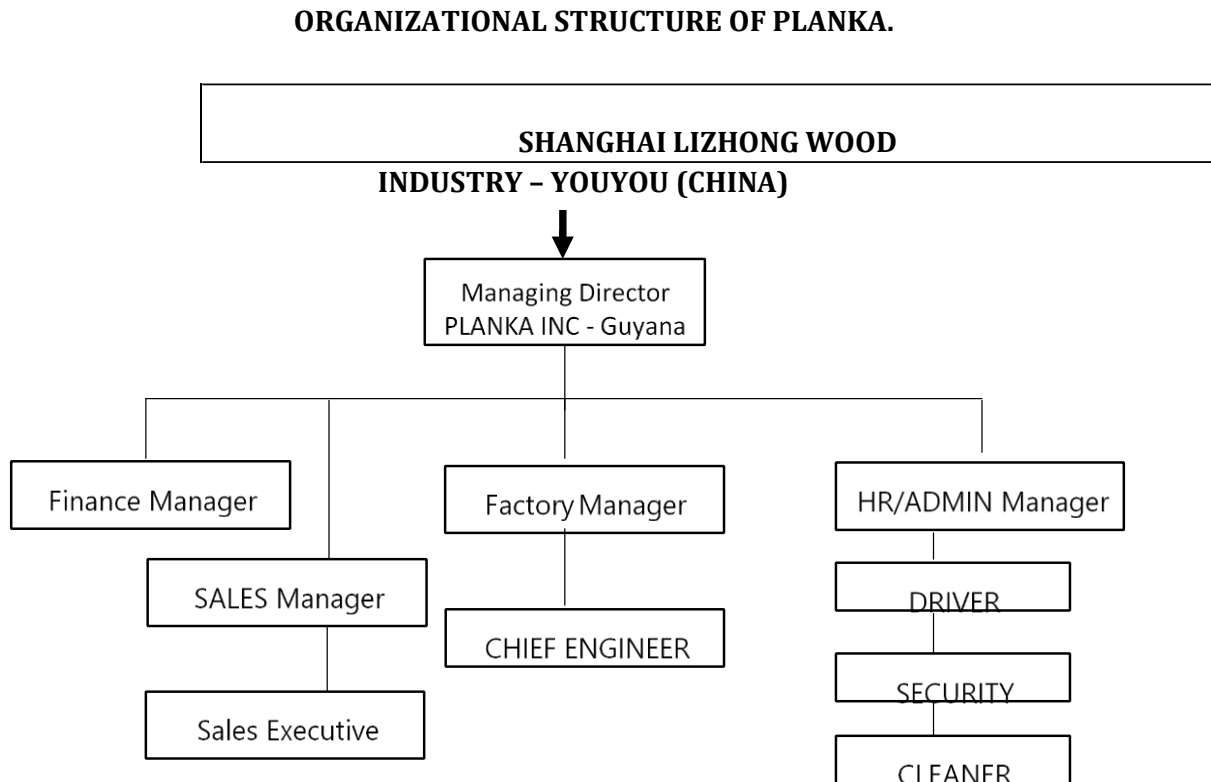
**Table 1 : Management team at PLANKA INC**

<b>Name</b>	<b>Designation</b>
<b>Chen Ling</b>	Managing Director/CEO
<b>Zhe Zhang</b>	Factory Manager
<b>Sun Feifei</b>	Finance Manager
<b>Meiyu Chen</b>	Admin Manager
<b>Wang Songguo</b>	Chief Factory Engineer
<b>Peng Chen</b>	Sales/Marketing Manager

The key management team has competent working experience in the related field of operations, especially in Asia and South America that includes: Malaysia, Indonesia, Guyana, and Suriname and in other countries. In support of the operations, the company is going to employ additional

experienced Guyanese personnel for all phases of operation and provide requisite training where required.

**Diagram 1: Organization Chart**



PLANKA INC will employ Initially 30 workers. 15 Expat, 15 Local in its plywood and veneer operations. PLANKA INC. plans to routinely engages other plywood and veneer operator to share ideas about production, processing and marketing, locally and overseas. No contractors are currently hired by PLANKA INC,

## **Business objectives**

The business objectives of PLANKA INC includes:

### **GENERAL OBJECTIVE**

Its general objective is to established a state-of-the-art DOWNSTREAM processing facility in Guyana operating in consonance with the all the regulating agencies guidelines and regulations, consolidating the Company as a corporate socially, environmentally and economically responsible entity, one that demonstrates the highest standards of meeting agreed deliverables, product diversity and quality, accountability, efficiency and professionalism.

### **SPECIFIC OBJECTIVES**

- a) 1.Ensure legal access to adequate timber resources enabling it to establish downstream processing facilities and value-added manufacturing capabilities to produce high quality timber and timber products for the domestic, regional and international markets.
- b) As practicable possible, maintain a staff compliment of about 75% Guyanese, prioritizing senior management recruitment are locally sourced.
- c) Dedicated towards the continued investing in downstream value-added processing and manufacturing activities in Guyana for the domestic and export markets.
- d) Target local, regional and international markets whilst promoting Guyana forest produce.

#### **Plywood and Veneer production Experience**

PLANKA INC. is a legally registered company in Guyana under the Company's Act CH: 89:01 with its director being Mr. CHEN LING. Mr. Ling has had extensive operational experiences in the field of marketing and sales and also developed distinguished collaborations with very reputable companies in China where he has propelled this business partnership agreement with one of the largest downstream sales companies in China, YOUYOU. This company has officially confirmed their interest in providing all equipment, finances, technical expertise etc. regarding the establishing and operationalization of a plywood and veneer factory and other associated facilities in Coverden, East Bank Demerara, under the name PLANKA INC.

RONG AN INC., a registered logging company in Guyana since 2006, has also committed to this partnership, to supply the raw materials for said facility from its three large forest concessions. RAI has in excess of 1.2m hectares under its stewardship, which potentially has the ability and capacity to sustainably supply the raw materials needed for the downstream facility. In an attempt to increase the production potential of RONG AN INC., such partnership venture serves to ultimately harness that reality.

Noteworthy, the positive economic growth, the transformational developmental projects, the housing boom etc., the Government and People of Guyana is presently experiencing, the forestry sector, especially, has and will always be, a key sectorial partner to satisfy the growing needs of that developmental trajectory presently being realized and the collaboration of RONG AN INC, PLANKA INC and YOUYOU are strategically placed to capitalize on said opportunities having

the largest forested area of Guyana, the exclusive market distribution channel and the technical and financial capacity to lend to further growth and development for the sector and the country at large.

Predominantly, log sales, both locally and export forms the basis of the operational line, however, intentional and committed decisions has been finalized in establishing a state-of-the-art downstream processing facility, which includes but not limited to, Sawmills, Veneer, Furniture Factory and Kiln Drying facility to maximize on the enormous existing opportunities, whilst increasing profitability and ultimately be the leading competitor in the forestry sector.

YOUYOU was established in China since 2009, originally founded as Shanghai Lizhong Wood Industry in 2002. As a diversified national high-tech enterprise, it integrates designing, research and development (R&D), production, sales and services of Home Internet Technology, Import and Export Trade, Eco-Friendly construction materials and low carbon new materials. Youyou has obtained more than 100 invention and utility model patents, and owns over 500 acres of production facilities, both domestically and internationally. Its domestic production headquarters is located in Tanyi Industrial Park in Linyi, Shandong Province.

YOUYOU promotes "Green Production, Green Living" by committing to formaldehyde-free environmental protection, green low-carbon practices, and a continues pursuit of "carbon neutrality"; The company offers a range of innovative low-carbon materials, including EBF inorganic straw board, WEBF wood composite plywood, formaldehyde-free new solid wood veneer, solid wood composite flooring, OSB board, with an annual production capacity of 5 million panels; Youyou also owns multiple registered trademarks, such as "Youyou", "Lisen", "LeYangyang", "LOYOYO", "IPF formaldehyde-free", "Lejia Home" "LECOCORE". Its products are exported to the United States, Australia, Europe and other countries, making Youyou one of the first domestic companies to successfully establish and operate its own brand in North America and Australia

### **Corporate Social Responsibility**

In keeping with the Government of Guyana Local Content Act which aims to ensures that companies operating in the country hire a certain percentage of local workers and use a certain percentage of local goods and services. PLANKA As practicable possible will maintain a staff compliment of about 75% Guyanese, prioritizing senior management recruitment are locally sourced (see specific objective b).

The company also intends to give priority employment to the community within its downstream facility just like with the forest operation, where for skilled and non-skilled workers and employed and provided the requisite training.

Staff from the Human Resources Department will go to communities and present the opportunities that are available and detail the conditions of applying and conditions of employment. Formal contracts will be issued to successful applicants who respond to job applications. Staff contracts will be determined to allow persons to visit their families at least once monthly.

Local staff will also get relevant training sessions and capacity building to improve their knowledge and effectiveness; incentives will also be offered for high performers. New employees will be trained on the job.

PLANKA is going to comply with the policy as practicable as possible, of limiting expatriate employment to 15 % maximum. At the professional, technical and vocational levels-the company commits to employ local workers, both experienced and new Graduates from the University of Guyana (UG), the Guyana School of Agriculture (GSA) and the Forestry Training Centre Inc. (FTCI).

The company in the course of its operation will co-ordinate with the FTCI for practical and theoretical training on relevant aspects to improve the operation and management techniques.

### **Geographic area and access**

This plywood and Veneer factory is strategically located on 3.45 acres of land situated at Block B, Public Road, Coverden, East Bank Demerara. With *coordinate 6.55786 °N 5822928 °W* the area can be access from Coverden Public Road, East Bank Demerara which is the only road leading to the project site and is located on the eastern side of the site, to the southern side there is an empty lot and no residential dwelling is in close proximity to project site.



*Google Image 1: Showing project area (2025)*

### **Site features and land use**

The terrain is generally flat, and there is a high drainage density. There is no vegetation on site since area have already been cleared and have existing infrastructures such as living quarters, kitchen, office and mechanic shop. The northern part of the plywood and Veneer factory area is where the dorms /living quarters are is located.

## **THE PROJECT**

### Overview

PLANKA intends to process 1,000 sheets plywood/day/20 crates with an estimate annual production of 288,000 sheets plywood/5,877 crates from 23,040m<sup>3</sup> (Baromalli) logs source mainly from RONG AN INC Large Forest Concessions. To ensure standard operation procedures areas will be set up as follows:

- a) **Raw Material Storage Yard (Log Pond):** A designated open yard for the storage of timber logs, with provisions for runoff control and dust suppression.
- b) **Production Area:** Enclosed industrial sheds house machinery for debarking, veneer peeling, drying, adhesive application, pressing, cutting, and finishing operations.
- c) **Adhesive and Chemical Handling Area:** A secure and ventilated zone for storage, preparation, and controlled use of adhesives and resins, with spill containment measures in place.
- d) **Water Supply and Effluent Management:** Water is sourced from [Guyana Water Inc.] and used for processing and utilities. Wastewater generated from the process and domestic sources will be discharge in an approve manner.

## Environmental Aspects Potential Impacts and Mitigation Measures

Environment Type	Project Activities	Project Phase	Potential Environmental Impact	Main Mitigation Measure	Impact Significance after Mitigation
<b>Physical Environment (Land/Soil)</b>	Clearing of lands for the construction of mechanical workshop, office, additional sheds, log pond	Construction	<ul style="list-style-type: none"> <li>Removal of specific site vegetation to facilitate the construction of project facilities has the potential to expose the soil to erosion,</li> <li>Scarification of soil surface and sub-soil, soil compaction.</li> </ul>	<ul style="list-style-type: none"> <li>Minimize removal of vegetation and encourages the re-vegetation of site impacted by clearance.</li> <li>Installation of drainage system to accommodate surge in storm water.</li> </ul>	Lo,Rev, St Av, M, In, Lp-
	Operation of Machineries	Construction /Operation	<ul style="list-style-type: none"> <li>Soil compaction from multiple passes of heavy vehicles over soil surface.</li> </ul>	<ul style="list-style-type: none"> <li>Avoid the use of heavy vehicles during periods of heavy rainfall.</li> <li>Design specific routes for heavy vehicles and equipment to use.</li> </ul>	Lo,Rev, St Av, M, In, Lp-
	Waste Disposal (solid and liquid waste)	Operations	<ul style="list-style-type: none"> <li>May result in soil contamination from indiscriminate disposal of liquid, solid and hazardous waste</li> <li>Contamination of water in proximity to disposal, modifications in water temperature, turbidity, ph. Pollution with oil</li> </ul>	<ul style="list-style-type: none"> <li>Implementation of a sound waste management system to include a waste disposal system at the location of operation and</li> <li>Avoid the dumping of waste in waterways</li> <li>Wood waste is minimized through optimization.</li> </ul>	Lo,Rev, St Av, M, In, Lp-
	Fuel and Oil transportation, handling, and storage	Operations	<ul style="list-style-type: none"> <li>Pollution from fuel and oil because of a spill during transportation, handling, or storage.</li> <li>Contamination of water in proximity to disposal,</li> </ul>	<ul style="list-style-type: none"> <li>Ensure that fuel, oils, and hazardous liquids are stored in a bunded area that has an impervious surface.</li> </ul>	Lo,Rev, St Av, M, In, Lp

			<p>modifications in water temperature, turbidity, ph.</p> <ul style="list-style-type: none"> <li>• Pollution with oil</li> </ul>	<ul style="list-style-type: none"> <li>• Due care will be applied to prevent spillage whilst handling fuel, oils, and potential hazardous liquids.</li> <li>• All fuel, oils and hazardous liquids will be stored away from streams and creeks.</li> </ul>	
<b>Physical Environment (Air)</b>	Operation of processing machinery, vehicles	Operation	<ul style="list-style-type: none"> <li>• Noise, dust, PM and smoke generated from the operation of the various machinery and movement of vehicle</li> <li>• Changes in microclimate.</li> </ul>	<ul style="list-style-type: none"> <li>• Ensure that all operative working in proximity to mills and saws be provided with personal protective gear: Earplugs, earmuffs, or noise-canceling headphones, dust mask</li> <li>• Implementation of dust control systems : baghouse / dust collectors, cyclone separators, wet scrubbers, Local Exhaust Ventilation (LEV) Systems</li> </ul>	Lo,Rev, St Av, M, In, Lp
	Operation of heavy-duty vehicles and equipment	Operation	<ul style="list-style-type: none"> <li>• Noise generated for the operation of the various pieces of equipment and machinery</li> </ul>	<ul style="list-style-type: none"> <li>• Ensure that all operative working on and in proximity to are provided with personal protective gear</li> <li>• Noise control system : Sound-Absorbing Panels (Acoustic Baffles), Vibration Isolation Systems, Quiet Equipment and Maintenance ,barriers and</li> </ul>	Lo,Rev, St Av, M, In, Lp

				partitions , noise level maintained 90-105dB	
Debarking, log soaking and veneer drying, gluing	Operation	<ul style="list-style-type: none"> <li>• Soaking logs in hot water may emit some VOCs.</li> <li>• Dust from bark and wood particles can become airborne without proper dust control.</li> <li>• large dryers (often fueled by natural gas, wood waste, or oil) and emits particulate matter (PM), formaldehyde, and VOCs from drying resinous wood.</li> <li>• Use of urea-formaldehyde or phenol-formaldehyde resins releases VOCs and formaldehyde gas.</li> <li>•</li> </ul>	<ul style="list-style-type: none"> <li>• All employees working in dusty environs will be provided with dust masks.</li> <li>• Implementation of dust control systems, and Local Exhaust Ventilation (LEV) Systems</li> <li>• Use of low-formaldehyde or bio-based resins</li> </ul>	Lo,Rev, St Un, M, In, Hp	
Operation of heavy-duty vehicles and equipment.	Operation	<ul style="list-style-type: none"> <li>• Dust and particulate matter resulting from the operations of chainsaws and movement of vehicles.</li> </ul>	<ul style="list-style-type: none"> <li>• All employees working in dusty environs will be provided with dust masks.</li> </ul>	Lo,Rev, St Un, M, In, Hp	
Disposal of wood Waste	Operation	<ul style="list-style-type: none"> <li>• Improper disposal of domestic waste from workers and generated from wood processing activities /Veneer and plywood production</li> </ul>	<ul style="list-style-type: none"> <li>• Green disposal and utilisation method implemented such as: mulching, landscaping, landfilling, composite, MDF and a daily reliable disposable service</li> </ul>	Lo,Rev, St Un, M, In, Hp	
All construction and Operation activities	Construction/ Operation	<ul style="list-style-type: none"> <li>• Risk of accidents from the used of the various equipment onsite</li> </ul>	<ul style="list-style-type: none"> <li>• All employees will be educated about the Company's OSH practices.</li> <li>• All working environments will be presented with First Aid kits.</li> </ul>	Lo: R: St: Av: M: In: Lp	

<b>Socio-economic Environment (Occupational Health &amp; Safety)</b>				<ul style="list-style-type: none"> <li>• Appropriate signage will be posted around all working areas.</li> <li>• Relevant and appropriate safe gear will be provided to all employees.</li> </ul>	
	Conflict results from shared workers resources	Construction /Operation	<ul style="list-style-type: none"> <li>• Restriction of access, alienation of rights, unplanned changes in lifestyle</li> </ul>	<ul style="list-style-type: none"> <li>• All employees will be educated on how to defuse conflicts.</li> </ul>	Lo: Rev: St: Av: M: In: Lp
<b>Socio-economic Environment (Employment)</b>	Increase in workforce	Construction /Operation	<ul style="list-style-type: none"> <li>• Increase in the incidences of crime, increase in the use of illicit drugs and alcohol, socially unacceptable behaviour and inappropriate with members of close-by communities.</li> </ul>	<ul style="list-style-type: none"> <li>• Illicit drugs and alcohol will not be allowed at operation site</li> <li>• All employees will be trained at a minimal level on how to engage with members of close-by communities.</li> </ul>	Lo: Rev: St: Av: M: Sig: Hp
	Hiring of Workforce	Construction /Operation	<ul style="list-style-type: none"> <li>• Skills transfer, Training opportunities job creation, increase incomes and cash flows</li> </ul>	<ul style="list-style-type: none"> <li>• Members of close-by communities will be sought after.</li> </ul>	Lo: Rev: St: Av: M: Sig: Hp
	Regional Development	Construction /Operation	<ul style="list-style-type: none"> <li>• Improvement of infrastructure.</li> <li>• Crime; use of alcohol; health risks, disagreeable behaviour</li> </ul>	All staff will be trained in-house on OSH and security	

**Impact Significance (parameters): Lo-localized, Ex-Extensive/ Rev-Reversible, Ir-reversible; / St-short term, Lt-long term/ Av-Avoidable, Un-Unavoidable. M-Mitigable, Im-Immitigable/ Sig-Significant, In- Insignificant/ Hp-High probability, Lp-Low probability**

## **Project Duration and Conclusion**

PLANKA INC looks forward to the challenges and the opportunity to make a tangible contribution to the development of the forestry sector. With an intended lifespan of over 10 years, PLANKA will implementing measures to ensure that forest resources conservation and best environmental practices be given adequate attention.