

## Environmental Impact Assessment (EIA) Screening Decision

### Window Manufacturing Facility

#### 1 SUMMARY OF THE PROPOSED PROJECT

LM12 Window Factory is located at Lot LM12 Bon Success, Lethem, in the Administrative Region #9. LM12 Window Factory is proposed in a recently airmarked industrial site as defined by the Guyana Lands and Surveys Commission. LM12 Window Factory is surrounded by other plots proposed for industrial use.

The proposed land for LM12 Window Factory is found along the Linden-Lethem trail, outside of central Lethem.

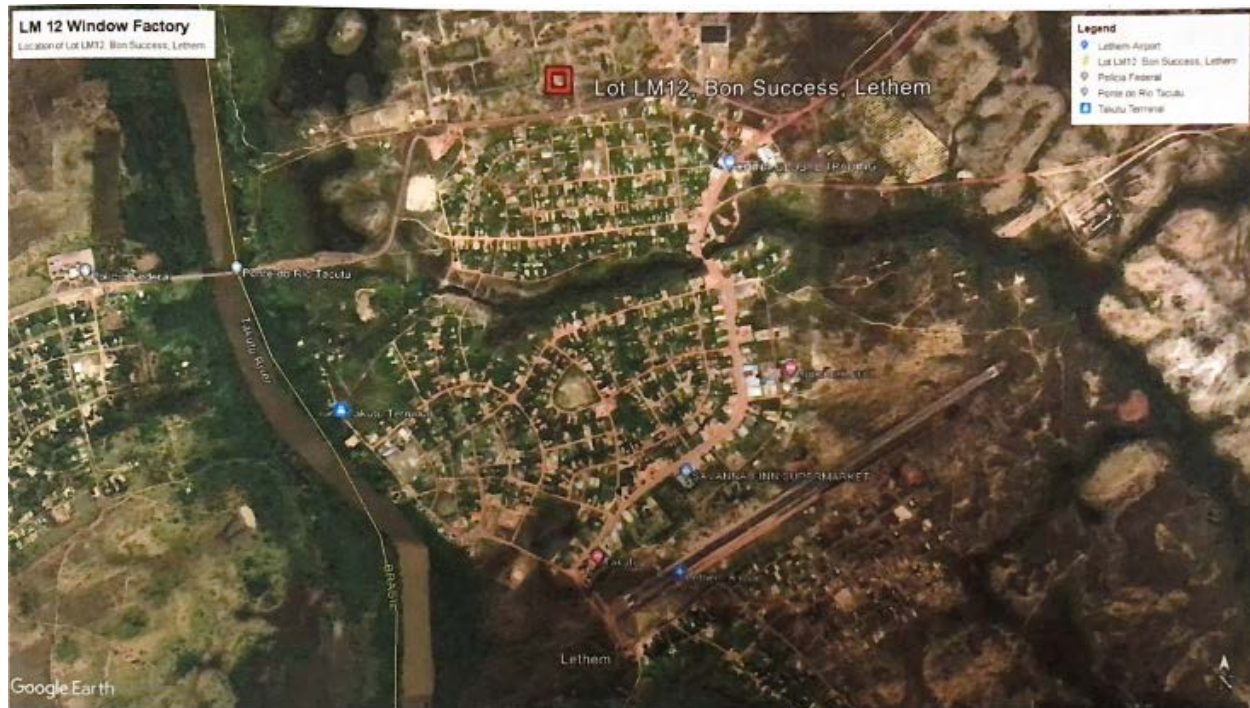


Figure 1: Location of Project

**Ganges St., Sophia, Georgetown, GUYANA.**

**Tel: (592) 225-5467/5471-5472/6044/6048 | Fax: 225-5481**



[epa@epaguyana.org](mailto:epa@epaguyana.org)



[www.epaguyana.org](http://www.epaguyana.org)



Environmental Protection Agency - Guyana

**“The Environment is Everybody’s Business”**



## 2 POTENTIAL ENVIRONMENTAL AND SOCIAL IMPACTS AND SCREENING DECISION

---

The EPA, based on existing data, the technical review of the application and supporting documents submitted to the Agency by LM12 Window Factory and observations made during field inspection exercises has determined that the impacts of the project to the environment are negligible and not significant.

Potential environmental impacts anticipated from the project are to air quality, waste management and noise levels.

Mitigation measures proposed to reduce the impact of these areas on the environment include:

1. Waste is anticipated only in small quantities and will be disposed of by an EPA-approved waste disposal service, also authorized by the Lethem NDC.
2. Generator will be enclosed in a generator house and equipped with a silencer and mufflers to reduce the noise of the generator.
3. The use of the generator will not be continuous. The generator will also be maintained according to the manufacturer's specifications to reduce risk of elevated Ambient Air Quality levels.
4. Dust suppression systems and the covering of transport vehicles will be employed to reduce the likelihood of dust emissions and pollution. Dust and air emissions are only expected during the pre-construction and construction phases and as such are not continuous.

### Conclusion and Recommendations

The environmental impacts of this project are considered to be not significant (negligible magnitude and unlikely to occur). LM12 Window Factory has proposed the above-mentioned mitigation measures to reduce and avoid any potential impacts to the physical environment. Additionally, the LM12 Window Factory will also exist >1000 meters away from residents and other sensitive receptors, thus there is no significant impact of the Project to residents. Therefore, it is recommended that the project be exempt from conducting an Environmental Impact Assessment (EIA), as set out in Section 11(2) of the Environmental Protection Act, Cap. 20:05, Laws of Guyana.

---

**Ganges St., Sophia, Georgetown, GUYANA.**

**Tel: (592) 225-5467/5471-5472/6044/6048 | Fax: 225-5481**



[epa@epaguyana.org](mailto:epa@epaguyana.org)



[www.epaguyana.org](http://www.epaguyana.org)



Environmental Protection Agency - Guyana

**“The Environment is Everybody’s Business”**