

Environmental Protection Agency
RECEIVED
24 SEP 2024
FORESTRY DEPARTMENT

PROJECT SUMMARY

**NAME OF PROJECT: PROPOSED LUMBER YARD AND PROCESSING PLANT
(SAWMILL)**

NAME OF DEVELOPER: HARDEEN AND SONS LUMBER DEALER

**LOCATION OF PROPOSED DEVELOPMENT: PLOT 'A' PORTION OF STATE LAND IN
THE VICINITY OF LOO CREEK, EASTERN SIDE. LINDEN-SOESDYKE HIGHWAY**

**CONTACT DETAILS: LOT 27, ECCLES INDUSTRIAL SITE, ECCLES, EAST BANK,
DEMERARA**

TEL. NO. 609-7675



DATE: SEPTEMBER 18, 2024

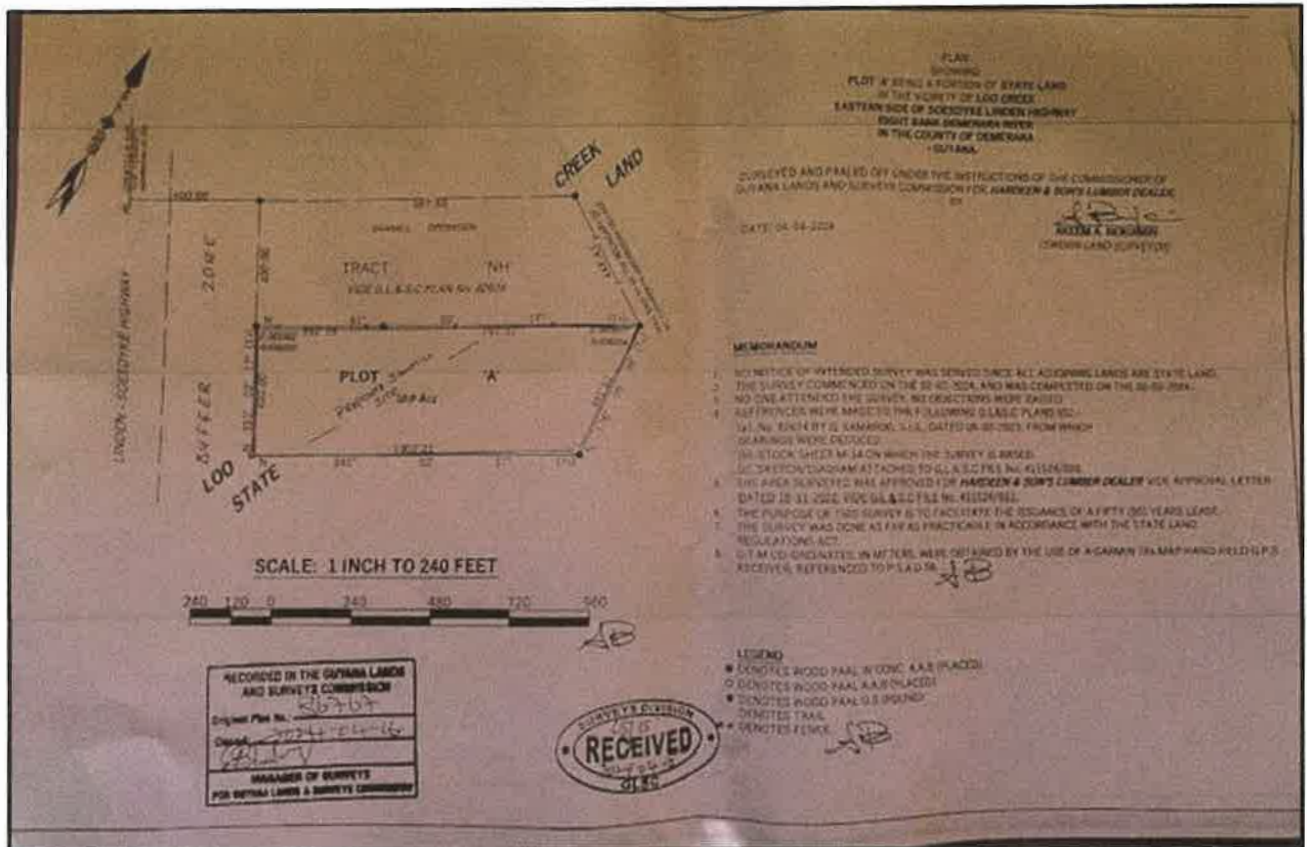
1.0 BACKGROUND

Hardeen and Sons Lumber Dealer was established in 1990 and has its main operational base at 27 Eccles Industrial Site, Eccles, East Bank Demerara, Guyana. The Company's main products are Greenheart lumber, Washiba, Greenheart Piles, Hardwood Lumber, and Purpleheart.

The Company has recognized the emerging development momentum in areas along the Linden-Soesdyke Highway and its environs. It was concluded that this scenario points to the need for a stronger supply response whereby builders can access lumber more conveniently and cost-effectively, particularly given the fact that a significant amount of the raw product is already transported for processing along the Linden-Soesdyke Highway. In this context, the Company assessed the situation and concluded that the establishment of a sawmill in the Loo Creek area was a feasible project worthy of planning and investment.

2.0 LOCATION AND DESCRIPTION OF SITE

The site is currently vacant and is located east of and along the Linden – Soesdyke Highway. It is 10 acres in size and is accessible via the Linden-Soesdyke Highway. The area of land is mostly flat terrain. The area of land is shown and defined on GLSC Plan No. 86767 dated 04-04-24 by A. Benjamin, Sworn Land Surveyor (copy attached).



3.0 PROJECT DESIGN

3.1 Overview

The Project involves the construction of a shed approximately 200 ft. x 112 ft. under which two wood processing mills, two lumber racks, offices, the generator room, the staff washroom, and the change room will be situated. Additional facilities on site include waste storage bins, a log stockpile yard, the staff kitchen and lunch room, and two workers' housing units.

For access purposes, a forty-foot wide driveway will be developed (compacted loam surface). All unutilized land further east of the site will be reserved for future development.

The machinery to be used includes the following:

- Two Cook Mill
- One Log Loader
- Two Rip Saws

- One Chain Saw
- One 175 KVA Generator Set
- One Moulder

The Machinery, save and except for the log loader, will all be housed on a concrete surface under the shed to be built.

At the full operational state, the business will employ six persons who will all be required to use Personal Protective Equipment such as helmets, face masks, and ear muffs during work.

In terms of production, the Sawmill is expected to produce approximately 35,000 to 40,000 BM of various dimensions of dressed and rough lumber monthly.

3.2 Development Stages and Activities

	Stage	Activities
1.	Site clearing and preparation	The site will be cleared. Access and drainage infrastructure to be installed.
2.	Development approval	Submission of all documents and drawings of the proposed development, as required for statutory approvals.
3.	Construction	The construction of all buildings and ancillary facilities (as proposed and required for the operation of the facility).
4.	Equipment installation	The installation of mills and generator
5.	Operational	This stage involves the stockpiling of lumber in the stockpile yard using log loaders for further cutting into blocks using a mechanically operated circular saw. The cut pieces of lumber will then be further processed using a gang saw and then dressed using a sawmill planer in preparation for delivery to the market.
6.	Site management and maintenance	This will involve the periodic upkeep of equipment and the continued management of the site to maintain desired environmental standards.

4.0 WASTE MANAGEMENT APPROACH

Waste emanating from the operations of this facility will be carefully managed to avoid any major environmental impact. The waste categories include:

- Wood waste
- General waste
- Waste water and sewage
- Hazardous waste

Wood waste includes sawdust, wood shaving, wood skins from raw lumber etc. The sawdust and other wood waste will be placed in storage bins on-site for future off-site disposal by a private waste disposal service. Unwanted strips or slabs of wood will be sold or used for landfill purposes. The Company will also encourage persons in the area who rear poultry to acquire the saw dust for use in poultry farms.

General waste includes domestic waste from occupants of the workers' housing units and employees using the staff lunch room. This constitutes articles such as food boxes, cans, and bottles. All such waste will be stored in receptacles for disposal off-site by a private waste disposal service.

The site will be equipped with an internal drainage system to channel rainfall run-off and wastewater off-site. Sewage will be disposed of by way of septic tanks.

Hazardous waste is considered to be waste oil, used batteries and filters. The policy is that this type of waste will be separately stored and disposed of off-site. Some amount of waste oil will however be re-used as lubricant in chain saw operations.

5.0 POTENTIAL EFFECTS ON THE ENVIRONMENT AND MITIGATION MEASURES

Air quality

The sawmill operations will produce particulate matter and volatile organic compounds that may impact on air quality. To mitigate against these dust collectors will be installed and appropriate ventilation systems. An effort will also be made to periodically wet dry dusty surfaces to minimize the spread of

dust due to wind action. Emission control technology will also be adopted in an effort to control air quality.

Water quality

It is noted that the sawmill operation is in the area of Loo Creek. Accordingly, care would be taken to ensure that operations do not negatively impact of the natural water systems. A system of perimeter drains will be used to control run-off. No oily substances will be discharged into the drainage system.

Hazardous waste

The potential impact of hazardous waste will be controlled through proper handling and disposal of such waste according to standard regulations. This will be supported by ongoing training and awareness initiatives targeting all workers.

Noise management

While the operations will produce some degree of noise, efforts to control noise levels will include regularly servicing equipment and the use of noise control devices, where possible. Also, the working hours will be confined from 8:00 am to 4:30 pm on Mondays to Fridays and 8:00 am to 12:00 pm on Saturdays. There will be no work on Sundays.

6.0 CAPITAL INVESTMENT

Hardeen and Sons Lumber Dealer projects a capital investment in this Project to the tune of sixty million Guyana dollars (\$60,000,000) with an annual turnover of seventy million Guyana dollars (\$70,000,000).

7.0 NON-TECHNICAL SUMMARY OF PROJECT

This Project represents the desire of Hardeen and Sons Lumber Dealers to develop a suitable area of land for lumber storage and processing (a Sawmill). It was conceived in the context of a conscious response to the growing needs of Guyana's building industry and also in recognition of new development trends along the Linden-Soesdyke Highway. While a focus on operational efficiency and profits underlies this as a business venture, the importance of

responsibility to the environment would never be disregarded. As such, operations will be strictly monitored in terms of compatibility with desired environmental standards, regulations, and practices particularly to ensure that no undue harm is done to the environmental assets/quality of the area.

8.0 CONCLUSION

Hardeen and Sons Lumber Dealer will commence the implementation of this Project once the necessary approvals are granted by the relevant authorities. The Company remains committed to facilitating the periodic inspection of its operation by all relevant agencies to monitor and ensure compliance with all regulatory requirements.

ROOPNARINE PERSAUD
for
HARDEEN AND SONS LUMBER DEALER
SEPTEMBER, 2024