

Overview/Project Summary

Project Name: Success International Sawmill & Boat Service

Address: Morganston, Berbice River.

Developer's Name: Eon Bender

Sector of Operation: Sawmill

Business Address: Same as Above

Date of Commencement of Project: 2023

Reporting Period: Year 2024

Working Hours: Monday – Friday (8 AM – 5 PM)

No. of employees: 8

Eon Bender

03-10-25

Description

Success International Sawmill & Boat Service is a sawmill and logging operation that is located at Morganston, Right Bank, Berbice River, and is being operated on 327.6617 acres of private land. The area is predominately forested with no residential buildings. On the immediate northern and southern boundaries, there are vacant lands privately owned by the Bender's family; on the eastern boundaries, there is a privately owned logging concession which is also situated on the 327.6617 acres of land; and on the western boundary, there is the Morganston River that runs parallel to both the portable mill and the logging concession.

During the operation, the following equipment are used:

- One LT 15 Portable Mill
- 2 Chain Saws
- One generator
- One Submerge Pump
- Three Canting dodge

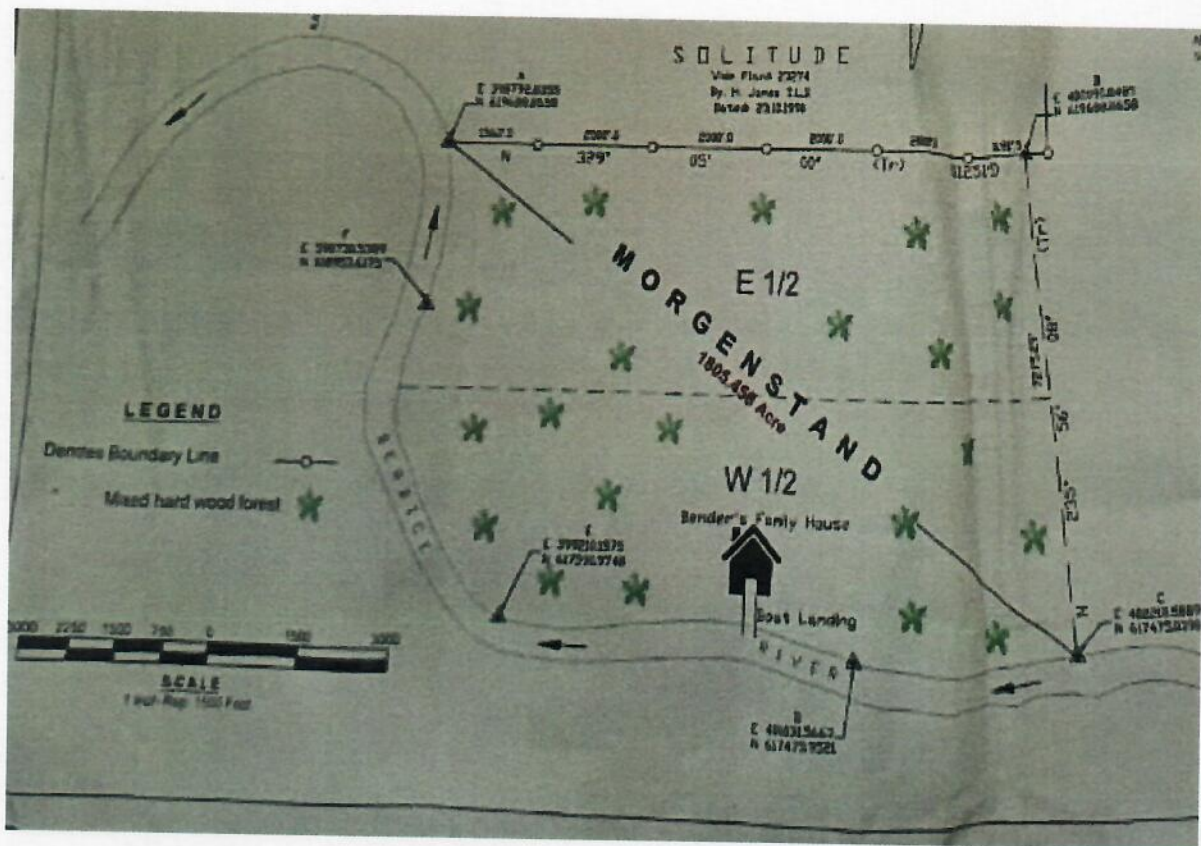


Figure 1 shows the area where Success International Sawmill & Boat Service is being operated

Operation Stage

Success International Sawmill & Boat Service primarily operated as a sawmill and logging concession for the past three years. The operation engaged in the conversion of raw logs into processed lumber for various commercial and construction purposes.

The process begins with experienced chainsaw workers felling trees of species such as crabwood, mora, and simarupa within the allocated logging concession area. The felled logs are then hauled by tractor to the sawmill for processing. Once at the mill, the logs are cut into various lumber sizes and specifications to meet market demands. Following the milling process, the sawn lumber is transported via barge along the Berbice River to New Amsterdam, where it is distributed and sold based on pre-received customer orders.

Operating hours for the sawmill are Monday through Friday, from 8:00 AM to 5:00 PM, with a designated lunch break from 12:00 PM to 1:00 PM. The company employed a total of eight workers, including machine operators, chainsaw operators, general laborers, and sales personnel, all of whom contributed to the smooth functioning of the operation of the sawmill and logging concession.

During the operating year of 2024, there were no major infrastructural developments or acquisitions of new machinery. The existing equipment remains in operation, and maintenance procedures are routinely performed to ensure efficiency. The facility is equipped with three fire extinguishers and an equal number of fire buckets as part of its safety protocols.

Regular monitoring ensures that the company adheres to all environmental and safety regulations stipulated by the Guyana Forestry Commission and other relevant authorities. At present, there are no outstanding compliance issues or pending regulatory concerns associated with the business.

By maintaining strict adherence to industry standards and prioritizing environmental responsibility, Success International Sawmill & Boat Service continues to operate efficiently while ensuring sustainable practices in the forestry sector.

Source of Utility

- The water from the Morganston River is being used for domestic purposes.
- Electricity is provided by the use of a CAT generator, which provides a power outage of 650 kVA.
- Communication services are provided by Starlink. Starlink is a satellite internet constellation operated by Starlink Services, LLC, an international telecommunications provider.

Waste Management

➤ Solid Waste

Effective waste management is a key consideration at Success International Sawmill & Boat Service. The primary byproduct of the milling process is sawdust, which is repurposed as landfill material. This helps in maintaining the site and reducing environmental impact. Additionally, slabs and offcuts produced during milling are also used as landfills or repurposed to create trackways for tractors, which are then covered with sawdust to enhance traction and stability. This approach minimizes waste accumulation and ensures that byproducts are utilized effectively. Further, all domestic waste is disposed of using a solid waste pit.

➤ Hazardous Waste/Material Management

The management of hazardous waste materials, particularly lubricants and fuels, is carried out with strict adherence to safety and environmental guidelines. Machinery servicing generates used lubricants and oils, which are collected and stored in securely sealed containers to prevent leakage and contamination. Instead of being discarded, these lubricants are reused where possible to maintain equipment functionality.

Project Size

A total of 12 million Guyana dollars were invested in starting the operation. The company employs a total of eight workers, including machine operators, chainsaw operators, general laborers, and sales personnel, all of whom contribute to the smooth functioning of the operation. The rate of production at the sawmill is 10,000 bm of wood per month.

Duration of the Project

The business is expected to have a lifespan of 20 years.

Potential Effects and Mitigation Measures

- **Water** – There is no discharge into the river. The fuel stored at the sawmill is stored away from the waterways within a steel tank with a capacity of 90 kg. The steel tank is placed on wooden foundations. Additionally, the machinery used at the sawmill is not located within proximity to the river. During maintenance of the equipment and the generator, waste oil is produced. Waste oil produced will be stored within a sealed container and reused as a lubricant.

- **Air** – Given the nature of sawmill operations, noise generation is an inherent aspect of the business. However, the facility is strategically located. There are no residents in the area, which significantly reduces the likelihood of noise disturbances. The portable mill used in operations are designed to generate lower noise levels compared to traditional fixed sawmill machinery. Additionally, there will be emissions from using the generator and machinery. The generator will be regularly maintained and will only operate during a power outage. There is also potential for dust nuisance from processing of the logs. However, there are no surrounding residents that can potentially be affected. The sawmill is surrounded by forested areas, which act as a buffer zone. Moreover, the employees are equipped with goggles and face masks during operation to prevent eye and respiratory irritation.
- **Soil/land** – There is potential for waste oil spills during maintenance and refuelling of the equipment. Any potential cross-contamination of the soil will be removed, stored within a sealed bag, and disposed within the solid waste pit. Fuel consumption is carefully managed, with supplies purchased on an as-needed basis to minimize excess storage and reduce the risk of accidental spills. All fuel-handling and storage procedures comply with industry standards to ensure the safety of workers and the surrounding environment.