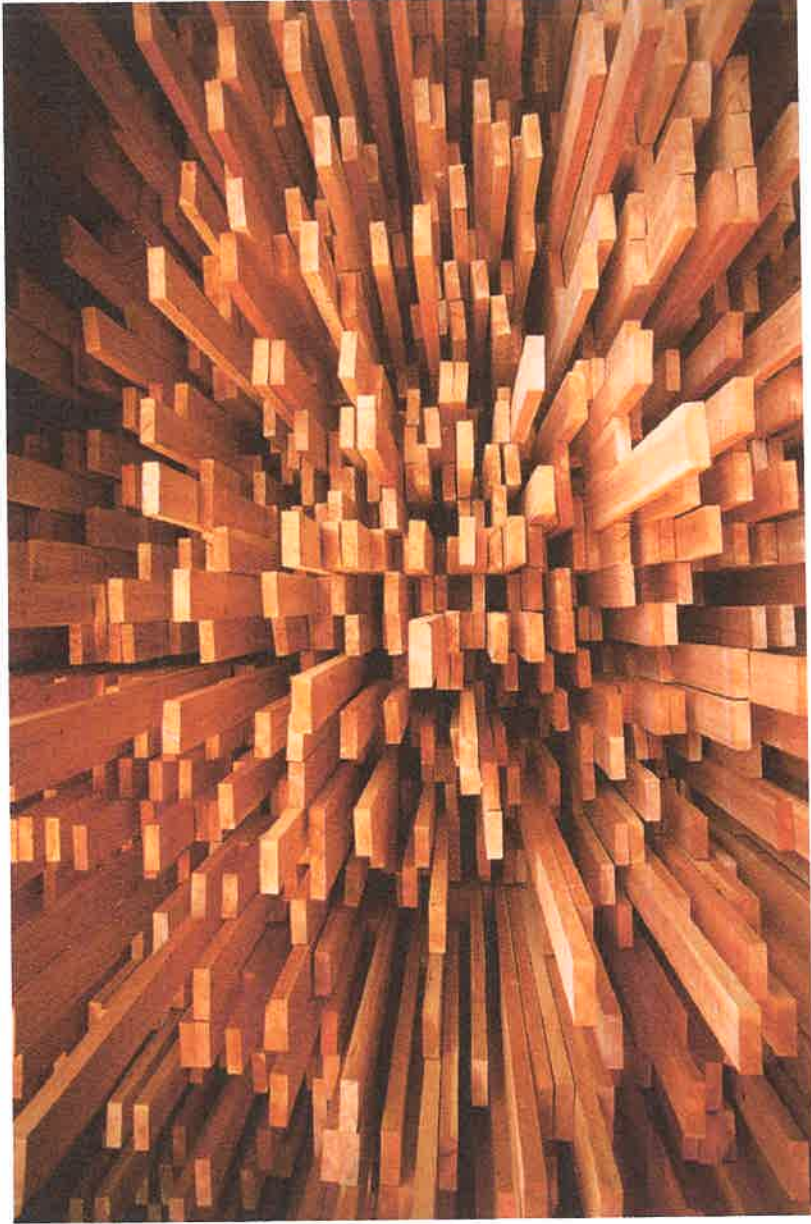


**PROJECT SUMMARY FOR ENVIRONMENTAL ASSESSMENT**

Dave West Indian Inc.



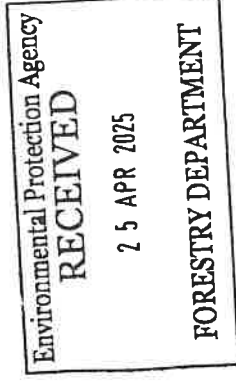
Small-Scale Saw Mill Operation

Plot 25, Block 15, Section A, Yarrowkabra, Soesdyke - Linden Highway, Region 4, Guyana

Prepared by: Omar Persaud BSc MSc

Prepared for: Dave West Indian Inc.

March 2025



## PROJECT SUMMARY FOR ENVIRONMENTAL ASSESSMENT

**Project Title:** Small-Scale Saw Mill

**Developer:** Dave West Indian Inc.

**Project Location:** Plot 25, Block 15, Section A, Yarrowkabra, Soesdyke - Linden Highway, Region 4, Guyana

**Capital Investment:** USD 100,000

**Project Commencement Timeline:** 6 months after obtaining all permits and approvals

**Production Output:** 5000 bm per week

---

### 1. Project Factsheet

Feature	Description
Project Type	Small-Scale Saw Mill
Developer	Dave West Indian Inc.
Forest Areas	BCE 05 and BCE 06
Intended Production	Hardwood Square Sections
Delivery Destination	Georgetown, Guyana
Production Rate	5000 bm per week
Workforce	Approx. 3 -6 local and contracted personnel
Capital Investment	USD 100,000
Project Timeline	Start in 6 months post-approval
Permit Authority	Guyana Forestry Commission (GFC), EPA Guyana

---

## 2. Overview of Guyana's Forestry Sector

Guyana is endowed with extensive tropical rainforests, covering approximately **85%** of its land area. The forestry sector plays a pivotal role in the national economy, contributing to employment, export earnings, and sustainable rural development. The country's forests are rich in biodiversity and are known for high-value timber species such as **Greenheart**, **Purpleheart**, and **Kabukalli**.

---

## 3. Governing Legislation and Regulatory Bodies

### Key Legislation:

- **Forest Act 2009:** Provides the legal framework for the management, conservation, and sustainable development of Guyana's forest resources. It outlines the procedures for granting concessions, harvesting timber, and ensuring environmental safeguards.
- **Environmental Protection Act 1996:** Establishes the Environmental Protection Agency (EPA) and mandates environmental impact assessments (EIAs) for projects that may significantly affect the environment.

### Regulatory Bodies:

- **Guyana Forestry Commission (GFC):** Responsible for the administration and management of forest resources, including the issuance of logging concessions, monitoring of forestry activities, and enforcement of forestry laws.
  - **Environmental Protection Agency (EPA):** Oversees environmental management and compliance, including the review and approval of EIAs and project summaries for logging operations.
- 

## 4. Project Justification & Rationale

The proposed development is based on the use of an L15 woodmizer to process logs into square sections of various sizes as required by customers and the market. There has been an increased demand for sawmill products that is driven by the increased construction and expanding economy of Guyana. This increased demand has seen prices go up, and there is an increasing delay in the ability of sawmills to fill orders based on limited production capacity in the face of rising demand.

The project is designed to contribute to national economic development by sustainably utilizing logs harvested from vacant forest concessions BCE 05 and BCE 06. Logging activities are focused on controlled extraction of commercial hardwood species for the domestic and regional market, creating local employment and enabling value-added production downstream.

Through the saw mill operations, the company will be engaged in the value-added market by processing the harvested logs into sawn square sections for customers. As such, this project aims to responsibly utilize available resources while maintaining environmental and social safeguards.

---

## 5. Market Analysis: Demand and Supply Dynamics

### Demand:

The demand for wood products remains robust both domestically and internationally. High-quality species such as Greenheart and Purpleheart are sought after for their durability and aesthetic appeal, finding applications in construction, marine industries, and fine woodworking.

### Supply:

The supply of timber is regulated through a system of concessions managed by the GFC. Sustainable harvesting practices are enforced to prevent overexploitation. The availability of specific species can fluctuate based on ecological assessments and conservation priorities, but is more directly affected by weather and access conditions.

### Market Trends:

- **Domestic Consumption:** Locally, timber is a primary material for construction and furniture manufacturing. The growth in infrastructure projects within Guyana has spurred increased domestic demand.
- 

## 6. Site Description and Characteristics

The proposed location of the saw mill will be in Plot 25, Block 15, Section A, Yarrowkabra, on the Linden - Soedyke highway. This area is already populated by several similar saw mill operations. Plot 25 is located in a wide, flat, open savannah area that is unoccupied and undeveloped. There are no adjacent or nearby activities or other land users.

---

## 7. Operational Methods

The LT15 woodmizer is a compact, manually operated sawmill designed for efficient and precise cutting of hardwood logs. Operations will include:

- **Receiving:** Logs delivered via flatbed truck to the yard for offloading and inspection.
- **Sorting and Staging:** Logs sorted by species and diameter for optimized cutting schedule.
- **Sawing:** Logs processed using the LT15 mill into square and dimensional sections as per customer requirements.

- **Drying and Stacking:** Air-drying or shed-covered seasoning of sawn timber.
- **Packing and Dispatch:** Packaged timber loaded onto transport vehicles for delivery.

Support structures will include a timber storage shed, covered mill shed, tool shed, and fuel storage.

## 8. Planning Brief

### Permitting Requirements:

- EPA Environmental Authorization
- GFC Timber Transport Documentation

### Stakeholder Engagement:

- Notification of nearby landowners and operators
- Community notice via public board

### Schedule:

- Months 1–3: Permit processing, site preparation
- Months 4–5: Equipment installation and training
- Month 6 onward: Operations begin

## 9. Maps and Visuals

To be attached:

- Site layout map showing mill, storage and access road

## 10. Environmental Impacts and Mitigation

Impact	Mitigation Measures
Noise from sawing	Daytime operations only, mufflers where possible
Wood waste	Collected and reused for firewood, mulch
Diesel and oil spill	Bunded storage, spill kits onsite
Airborne dust	Sprinkler system for yard, masks for workers
General waste	Proper disposal, bin segregation

## 11. Employment and Human Resources

The sawmill will employ 6–10 persons, with the following key roles:

Role	No. of Staff	Monthly Pay (USD)
Mill Operator	1	1200
General Labourers	2	800
Mechanic	1	1000
Administrative Clerk	1	1000
Security	1	800

## 12. Equipment Inventory

- 1 x LT15 Woodmizer Sawmill
- 1 x Forklift or loader
- 1 x Portable generator (10 kVA)
- Basic woodworking tools (planers, grinders, measuring tools)
- Safety equipment (gloves, helmets, eyewear, boots)

## 13. Financial Overview

**Capital Investment:** USD 100,000

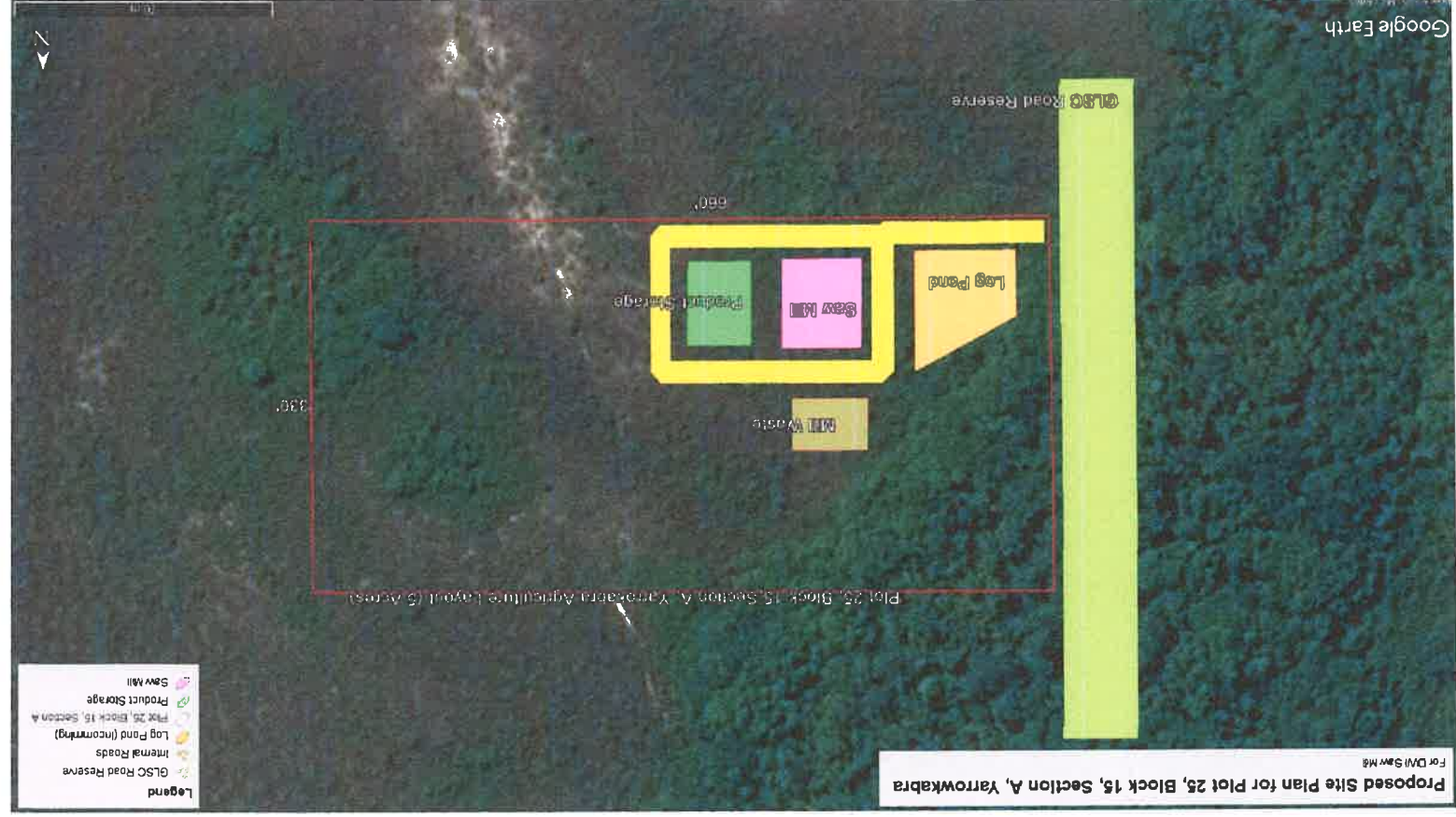
**Annual Costs:** USD 70,000–80,000

**Projected Revenue:** USD 150,000–200,000 annually

**Net Operating Profit:** Approx. USD 70,000/year depending on volume and sales

## 14. Conclusion

The proposed LT15-based sawmill project by Dave West Indian Inc. will offer low-impact, high-value processing of logs into sawn timber. With no logging or forest extraction on-site, the environmental footprint is minimal. The project will provide employment and support the national demand for quality construction timber while operating in compliance with EPA and GFC guidelines.



Proposed Site Plan

