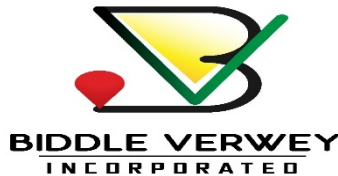


PROJECT BRIEF

FOR:

TRANSPORTATION SERVICE GARDEN OF EDEN, EAST BANK DEMERARA, GUYANA

Submitted by:



Company Details

Biddle Verwey Inc.

Address: Parcel 279 Block XXIX

Garden of Eden

East Bank Demerara

Telephone # :592-266-5632

592-601-1818

592-660-4158

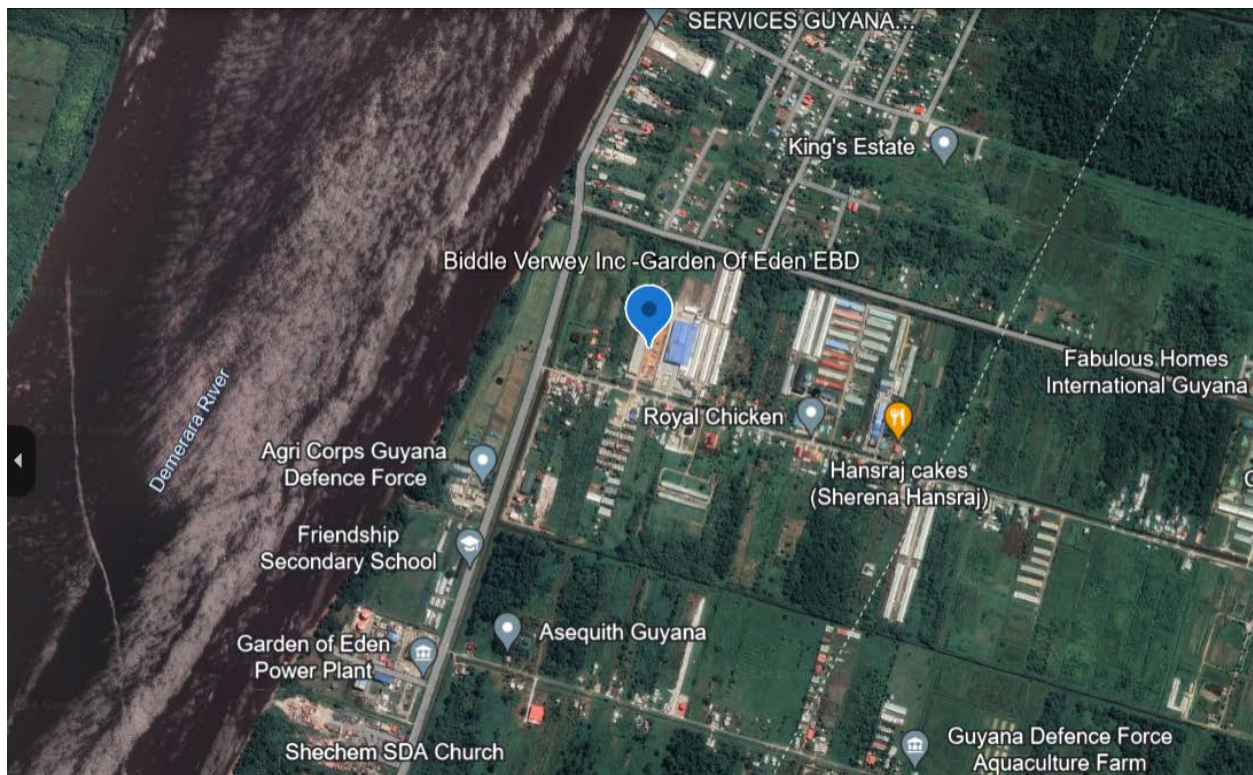
Prepared by: Surujnie Jeffrey
Company secretary

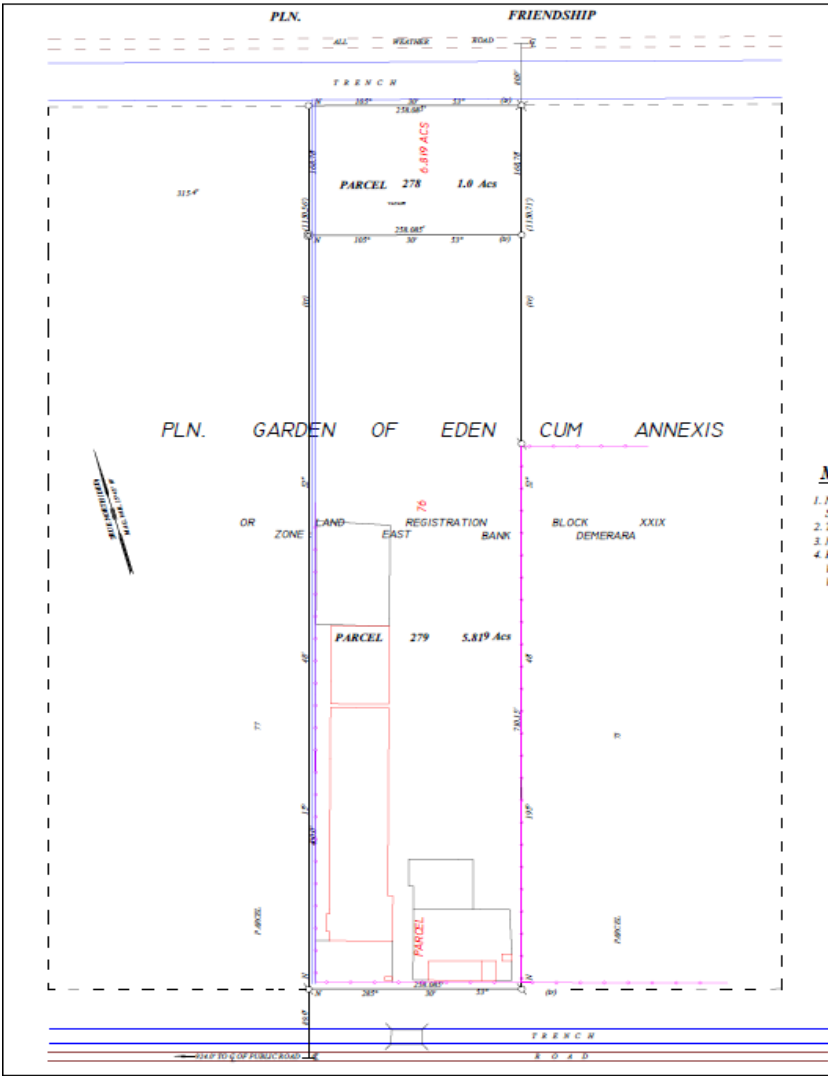
2 PROJECT LOCATION

The Transportation Service Base is located in Garden of Eden East Bank Demerara, Guyana (grid coordinates 6°38'30"N 58°11'38"W). The location of the Project area is shown in Figure 1.0.

- I. The location is approximately 0.23 Km southeast of the existing Agri Corps Guyana Defense Force. The Operations sits on 2.58 Acres of land fully owned by our group of companies.
- II. The Service Base is Non Disputed and is a titled property and owned by the company
- III. The Initial the property was already developed with infrastructural amenities; Warehouse and office building
- IV. Appendices: See attached copy of Land Title

Figure 1.0: Site Location





PLAN
 SHOWING
MUTATION PARCELS 76 INTO PARCELS A AND B
PLN. GARDEN OF EDEN CUM ANNEXIS
 OR LAND REGISTRATION BLOCK No. XXIX
 ZONE: EAST BANK DEMERARA
 SITUATE ON THE EAST BANK OF DEMERARA
 IN THE COUNTY OF DEMERARA
GUYANA.

SURVEYED AND PAAL OFF AT THE REQUEST OF
 THE COMPANY SECRETARY FOR EDDLE INC. S.A.C

BY

DATE: 2021-07-11

SURIN SUXHAI
 (SWORN LAND SURVEYOR)

MEMORANDUM

1. NOTICE OF INTENDED SURVEY WAS SERVED ON THE CHAIRMAN OF CALEDONIA/GOOD SUCCESS N.D.C. S.BACCHUS AND A.KHAN.
2. THE SURVEY COMMENCED ON 19-08-2019 AND WAS COMPLETED ON 19-08-2019.
3. NO ONE ATTENDED THE SURVEY. NO OBJECTION WAS MADE.
4. REFERENCE WAS MADE TO G.L.&S.C PLAN No. 49311 BY C. MAHIPAUL, S.L.S, DATED 02-09-2011 FROM WHICH BEARINGS WERE DEDUCED AND No. 32044 BY A.K.DATADIN S.L.S, DATED 25-04-2009 ON WHICH SURVEY WAS BASED.

LEGEND

- DENOTES STEEL ROD IN CONC. C.M (FOUND)
- ⊗ DENOTES WOOD PAAL IN CONC. D.D.S
- DENOTES WOOD PAAL D.D.S
- ⊘ DENOTES WOOD PAAL S.M. J (FOUND)
- DENOTES TRENCH
- DENOTES FENCE
- DENOTES BUILDING

SCALE: 1 INCH TO 100 FEET



3. DESCRIPTION OF THE DESIGN

Biddle Verwey Inc. is a New Transportation and logistics company that operates in Guyana and provides heavy equipment transport and logistical services. Our company is 95% staffed by Guyanese. Our operational management team, is Guyanese with significant local and international expertise in heavy equipment transportation and logistics. We are focused on large corporate and industrial customers on the coastal Region, and in the agricultural, mining, logging and interior industries. We provide Reliable and sustainable business service to a large variety of clientele

Biddle Verwey Inc. is a privately owned company and our senior management team has over 200 years of combined experience in heavy equipment transport and logistical services. This company is the Guyana subsidiary of Biddle Inc., which is an international company based in Peru, that has been in existence since 1992. We plan to invest US\$ 5 million over a 3-year period into this project. Most of these expenditures would be on specialized transport vehicles, operational equipment, the physical facilities to house them, and in the local staff to execute the company's operations.

The mission of Biddle Verwey Inc. is company serving the industrial sector, seeking our clients' satisfaction through innovative processes and engaged partners with cost-effective management including sustainable development. The company intends to achieve this mission by providing quality services at competitive prices, and developing long-term win-win relationships with our industrial customers and corporate clients.

Biddle Verwey Inc. is committed to furthering the Government's agenda of sustainable growth in a green economy. As such, our facilities will have a major portion of its power needs met by solar power. Waste materials generated from our routine operations will be reused and recycled as much as possible, especially cardboard, wooden pallets, and metallic waste. All of our employees and suppliers will be trained in basic environmental management, and specific environmental management processes relative to their individual tasks. We will ensure that we keep abreast of the latest environmental technology and regulations. Our new facility will also be certified and compliant with all the necessary Occupational Health and Safety (OSHA) requirements.

WHAT WE TRANSPORT?

We do Specialized transport and storage for the Oil and Gas Sector This Includes Subsea Equipment, Hazardous and Non Hazardous Chemicals

Biddle Verwey Inc. is a well-established company, which is now establishing its Guyana subsidiary. Biddle Verwey Inc. intends to become the market leader in provide heavy equipment transport and logistical services in the country. Biddle Verwey Inc. has and established international management team; and we will be establishing a local management and technical team with very deep industry and marketing experience. Biddle Verwey Inc. will be a Guyanese company deeply committed to corporate social responsibility (CSR), and we intend to adopt specific underserved communities where our workers reside, for targeted social impact interventions.

With these aspects of its business, Biddle Verwey Inc. will provide quality heavy equipment transport and logistical services at affordable prices to industrial and corporate customers. Implementation of our strategic objectives will help the company to grow, increase its market share, and ensure our long term sustainability. We anticipate our full-time staff growing to 15 within the 1st year, 17 within 2 years, and 20 by the end of 3 years. With purchase of additional equipment and assets within the first 2 years, we would also hire contract staff on a needs basis to handle seasonal fluctuation in our work-load.

1.1 WHAT IS A TRANSPORTATION SERVICE BASE?

Biddle Verwey Inc. Transport Base comprises of the following

Workshop(s): The base will contain workshop space where we do equipment servicing and general maintenance.

The Workshop(s) are fully equipped with all the welding machines, lifting Joist, Air Compressor, secured Tool Box and Kits etc.

Warehouse(s): The base will contain 3 warehouse space warehouse #1 is for the storage of oil and Lubricants, parts and small tools required to support operations while warehouse # 2and #3 are for the storage of Hazardous and Non Hazardous Chemicals

Warehouse # 1

The Warehouse currently consist of (10) racks used for storage of tools, fuel filters, spare parts oil and lubricants.

Warehouse # 2

This warehouse is use Client Storage

Warehouse # 3

This warehouse is use for Client storage

Office Space: The base office currently consists of 1 two story building with offices on the top floor and storage facility on the ground floor for our mechanical department

Living Quarters: This is one fully furnished 4 bedrooms flat House located at the eastern side of the entrance. This is to facilitate employees from overseas and employees who are working overnight shifts.

Laydown Yard Space: The base will contain an outside open-air yard space to secure our transport vehicle and tractors and trailers.

Fuel Storage: The service base has a diesel fuel storage tank with capacity for 4,500 liters with safe-fill capacity of 3,800 liters for refueling of trucks, forklift, cranes and Generator. This storage tank is in the Western section of the service base. The fuel storage tank is fabricated from mild carbon steel. Potential impacts can be spillage during refilling of diesel fuel by supply vendor into the storage tank. In addition, fire is also a potential impact when if the diesel fuel is exposed to open flames, sparks, or other ignitable sources.

Mitigations: The fuel tank is positioned within a containment of a 110% of its capacity. Spill kits with; absorbent pads, berms, disposable bags, gloves...etc. are installed close to fuel storage tanks. Appropriate safety signage's are displayed on the diesel storage tank along with applicable GHS labels and signage. Additional mitigation includes. Portable Fire Extinguishers installed in proximity to the storage tank.



4. DAILY OPERATIONS

1.1.1 The primary daily operational aspects will consist of:

- Transportation Service
- Crane and Lifting Rental
- Equipment service and Maintenance
- Waste disposal.
- Storage facility

The operations phases are described in more detail below.

1.1.2 Transportation Service

This Service is provided offsite to and from the Clients location, with the exception of the warehouse storage where the items are set to be stored at our facility. These are brought from another location to our location. This is usually being usually spearheaded by the client.

1.1.3 Crane Rental and Lifting Service

This service is mostly executed at our client location, we do specialized lifts for XT's, Jumpers, Tubing Head, Reels, Frames, Injectors and reels, Containers. These lifts are supported by a lift plan provided by our Crane Lead completed with information provided by the client and supervised by the client as well.

1.1.4 Hazard identification and mitigation measures for air, noise, radiation, and water as they relate to the project.

Air, noise, radiation and water hazard identification and mitigation measures.

The tractor and trailer used for transporting MPFM jumpers are adequately maintained. Thus, potential hazardous conditions related to air and noise are mitigated by having our transport equipment/vehicle outfitted with air filtration and noise suppression fixtures.

As it relates to identification of radiation hazard. The radiation source transported are sealed source with no exposure to personnel or public during transport. However, radiation caution signage, police escort, approved traffic management plan and having the radiation safety officer in convoy transport are our adopted mitigation measures.

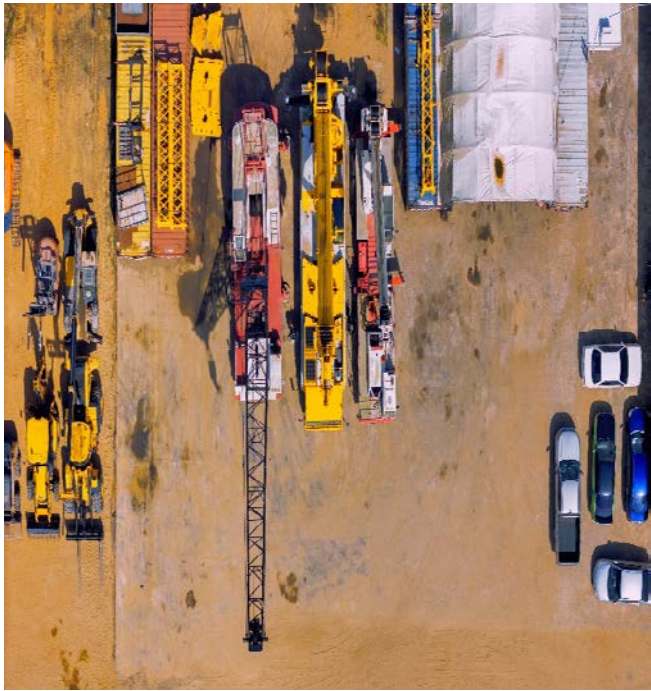
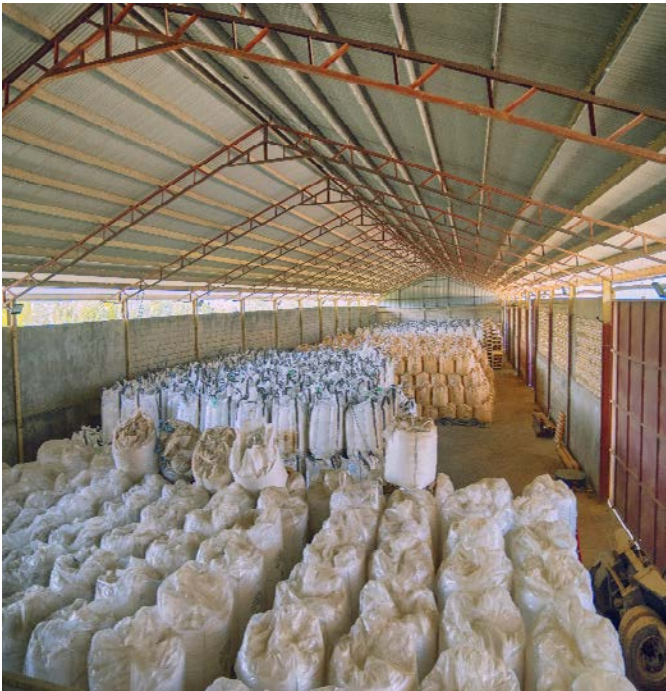
Transport is done primarily via the roadway and does not involve crossing any waterways. Thus, there are no potential hazardous condition relative to water for mitigation,

1.1.5 Waste Disposal

The facility will generate waste.

Waste Disposal from the Transportation base will be the typically combustible materials such as paper, wood cardboard etc. Biddle Verwey Inc. will set in place a recycling program and will work with the local Guyana waste management facility to process and recycle its domestic waste. In addition, we are currently engaging the services EPA approved contractor for our hazardous waste.

Photo of our Base and Warehouse Storage Facility



1.0

