

Project Summary

Name of Operation

Alleyne's Fuel Depot

Name of Developer/Company

Mr. Montgomery Alleyne

Image of Operation



Contact details

Address of Operation

1 1/2 Miles Port Kaituma

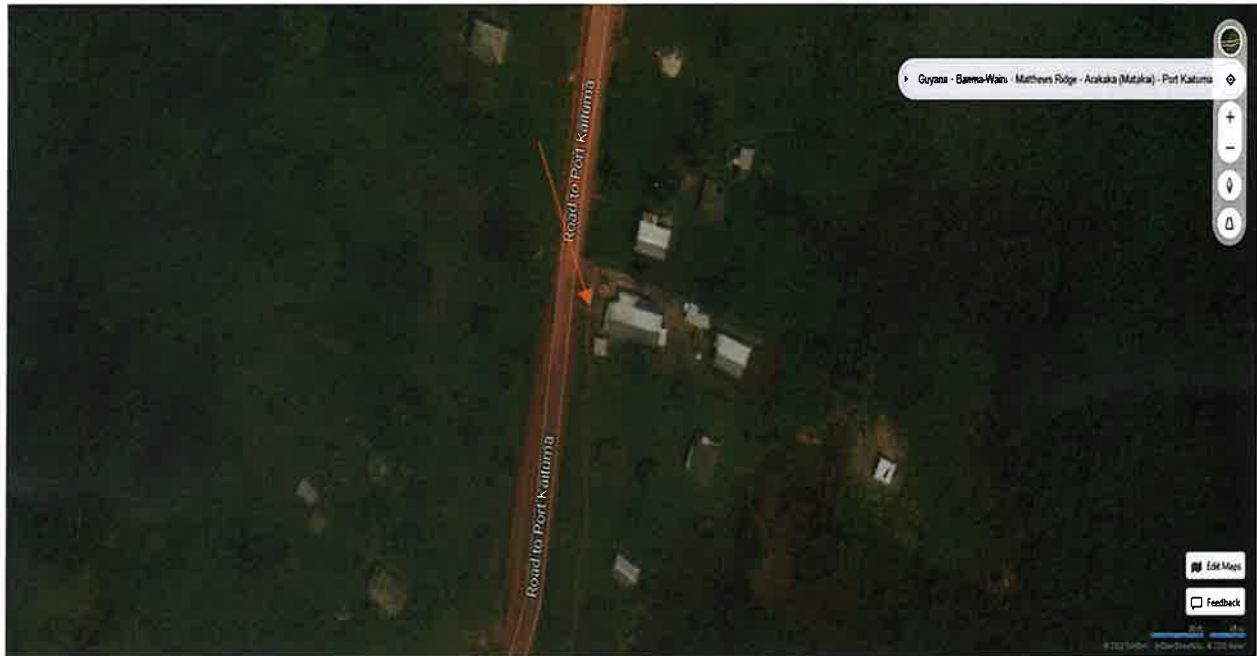
Date Prepared

December 15, 2023

Introduction

Alleyne Grocery store is located at 1 ½ Miles Port Kaituma, the facility stores approximately ten (10) to fifteen (15) drums (45gals) of diesel and gasoline for the purpose of resale. Drums are stored on an impermeable concrete base and housed in a wooden bond.

Section 2: Description of Project Location



Address and Coordinates: Provide the specific address or geographical coordinates of the location: [7.713783, -59.882750](#)

- **Accessibility:** Briefly describe how accessible the site is in terms of proximity to roads, highways, or other transportation routes: Access to the site is south via the One Mile Road.
- **Land Use and Surroundings:** Mention the immediate surroundings, such as nearby industries, residential areas, or commercial zones: East – Residential building, South – Building, North – Building and West – Vacant Land.
- **Safety and Security:** Highlight any inherent safety advantages or challenges related to the location (e.g., distance from populated areas, emergency services availability):

- **Environmental Consideration:** Mention any notable environmental factors or features without diving into extensive details (e.g., proximity to water bodies, general environmental characteristics): 300 yards to the front of the property a creek.
- **Future Expansion Potential:** If relevant, mention whether the location allows for potential future expansion of the facility: Yes, expansion to the fuel area in 2024.

Section 3: Description of Project

No construction is required, given that the facility is existing however, the developer did indicate that future plan for modification will be conducted in 2024.

Table 1: Emissions for Air

No.	Type	Sources
1	Gaseous pollutants (combustion gases)	Generator System – Small (350watt)
2	Particulate Emissions	Exposed concrete or dirt surface during the dry season

Table 2: Solid Waste

No.	Type	Treatment/Disposal Methods
1	Domestic Waste – General Garbage one bin	Disposal site in Port Kaituma

Table 3: Liquid Waste

No.	Type	Treatment/Disposal Methods
1	Domestic Waste Water (Grey Water)	Via the drainage network located within the property.
2	Sewage	The facility has one (1) septic tank.

Table 4: Hazardous Waste

No.	Type	Treatment/Disposal Methods
	Off Specification Fuel	
	Waste Oil	
	Oily Rags	
	Waste from spills or leaks	
	Used batteries	

Section 4: Project size e. g capital investment, number of employees etc.:

Capital Investment is approximately GYD\$5,000,000

Number of employees: Owner and Wife (2)

Section 5: A non-technical summary of the project what type of activity and how is it conducted?

Fuel is stored in ten (10) to fifteen (15) forty-five (45) gallon drums (Diesel and Gas) and housed inside a wooden bond which has a concrete floor. Fuel is pumped from the drums via a gravity flow hose and sold to customers in five (5) gallon pales. Fuel is purchased from bunkering vessels located at the water front on a monthly basis. The facility has one (1) fire extinguisher and one (1) sand bucket.

Section 6: Potential Impacts and Management

Environmental Impacts

1. List of impacts

Mitigation Measures

Aspect	Mitigation Measures
Emission to Air: Dust/Particulates	Wet Suppression method to control dust upwelling
Noise and Vibration	Vehicles are asked to turn off engines when at the facility.
Discharge to surface water	Currently the site has two (2) earthen drains which run east to west.
Potential release to land/soil	Facility will purchase a spill kit.
Generation, Storage and Disposal of Hazardous Waste	Facility only generates domestic waste which is stored in bins and collected by the council twice weekly.

Health and Safety Risk

Facility has three (3) fire extinguishers and two (2) sand buckets.

Images of the facility:

